

Siz Hayal Edin Biz Gerçekleřtirelim
You Imagine We'll Make It Happen

Beton Blok Ürünleri Kalıp Katalođu
Concrete Block Mould Catalogue



www.namtas.com





İHTİYAÇLARINIZA Göre Çeliği Şekillendiriyoruz...

NAMTAS müşterilerinin ihtiyaçlarına cevap verebilecek en ideal beton ürün kalıbı üretim hizmetini sunar.

Kalıp üretimine uygun, yüksek sertlik derecesine sahip çelik malzeme özenle seçilir ve yüksek teknoloji CNC tezgahlarda işlenir.

Bir takım analiz ve montaj işlemlerinden geçirilen kalıplar, müşterilerimizin kullanımına sunulur.

We Shape The Steel To Suit Your NEEDS...

NAMTAS provides the ideal Concrete mould production service according to the customers needs.

High tempered steel, suitable for mould production, is chosen carefully and cut with CNC machines. The Moulds are shipped to customers after a certain number of analysis and installations .



İÇERİK / CONTENTS

PARKE TAŞI / PAVING STONE	4
BORDÜR / CURBSTONE	40
BETON-BİMS BLOK / HOLLOW BLOCK	52
BETON OLUKLAR / CONCRETE GUTTERS	66
DEKORATİF ÜRÜNLER / DECORATIVE PRODUCTS	70

PARKE TAŞI / PAVING STONE

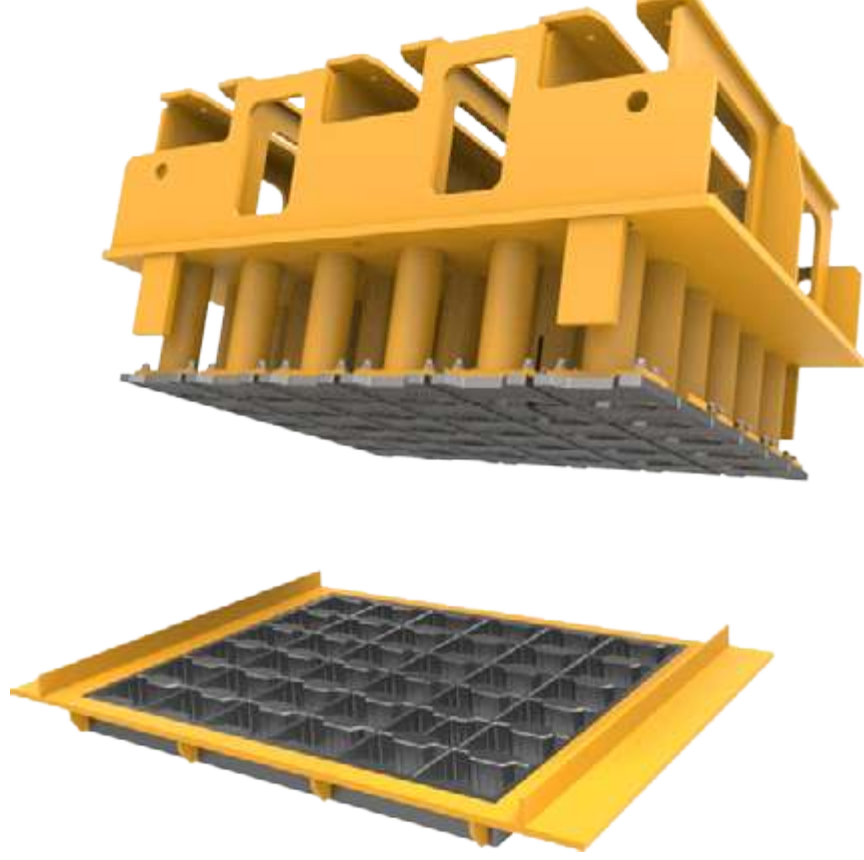
BORDÜR / CURBSTONE

BETON/BİMS BLOK / HOLLOW BLOCK

BETON OLUKLAR / CONCRETE GUTTERS

DEKORATİF ÜRÜNLER / DECO. PRODUCTS

PARKE TAŐI / PAVING STONE



Kolay uygulanabilirliđi, uzun 6mrü ve düşük maliyetliliđi ile parke taŐları park, bahçe ve meydanlarda, yürüyüŐ yollarında, peyzaj mimarisinde ve inŐaat sektöründe en çok tercih edilen ürünlerdir. NAMTAŐ yüksek kalite ve geniş çeŐitlilikte ürün yelpazesıyla müşterilerine uygun çözümlerle, talep edilem beton parke taŐı ürünlerinin kalıplarını sunar.

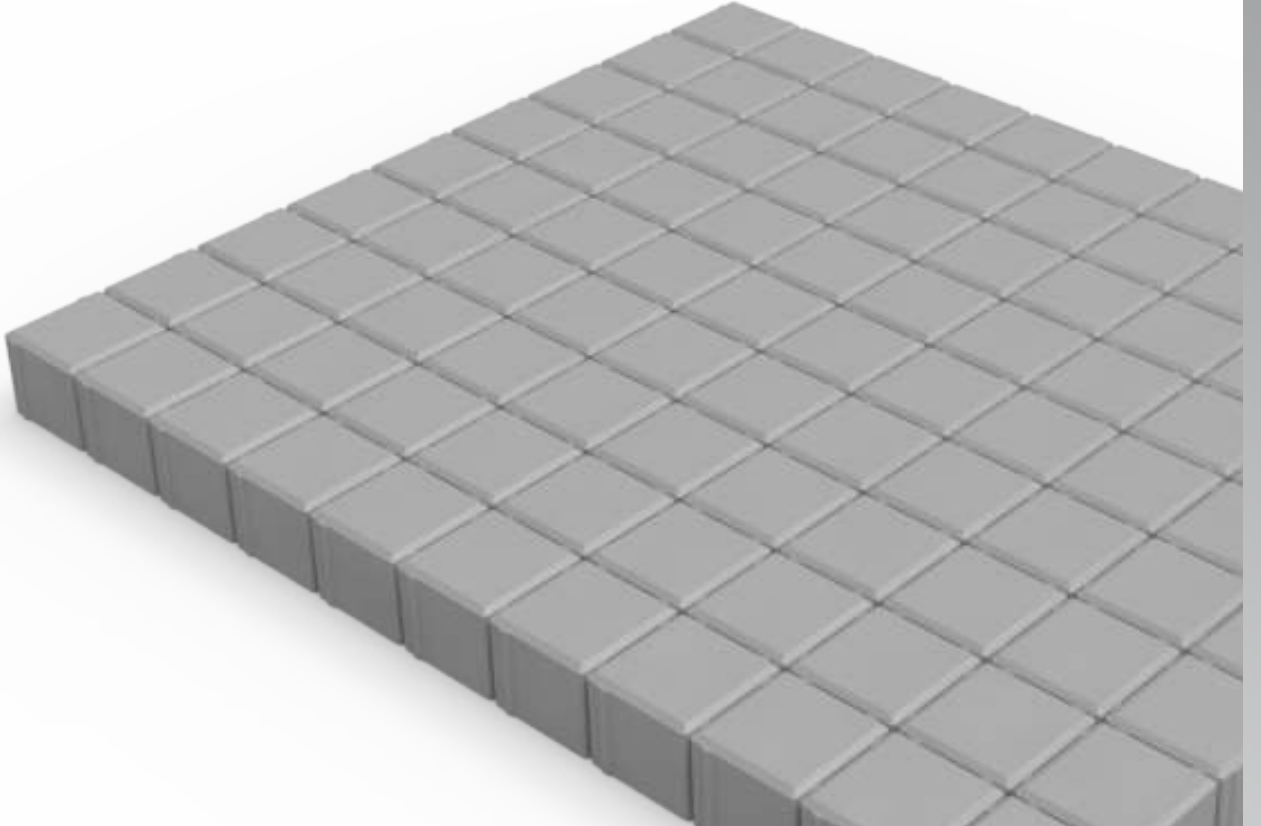
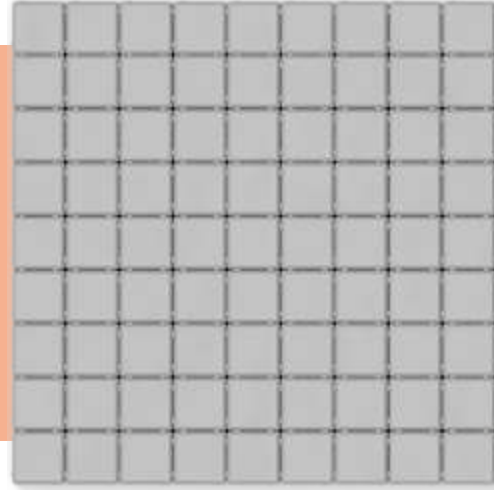
Due to its longlife, low cost and easy to apply features, paving stones are the most preferred products in the construction sector and are used by landscape architects in parks, gardens, squares and walking trails.

Namtas presents the requested Paving Stone moulds to the customers with high quality, wide production range and customer based solutions.



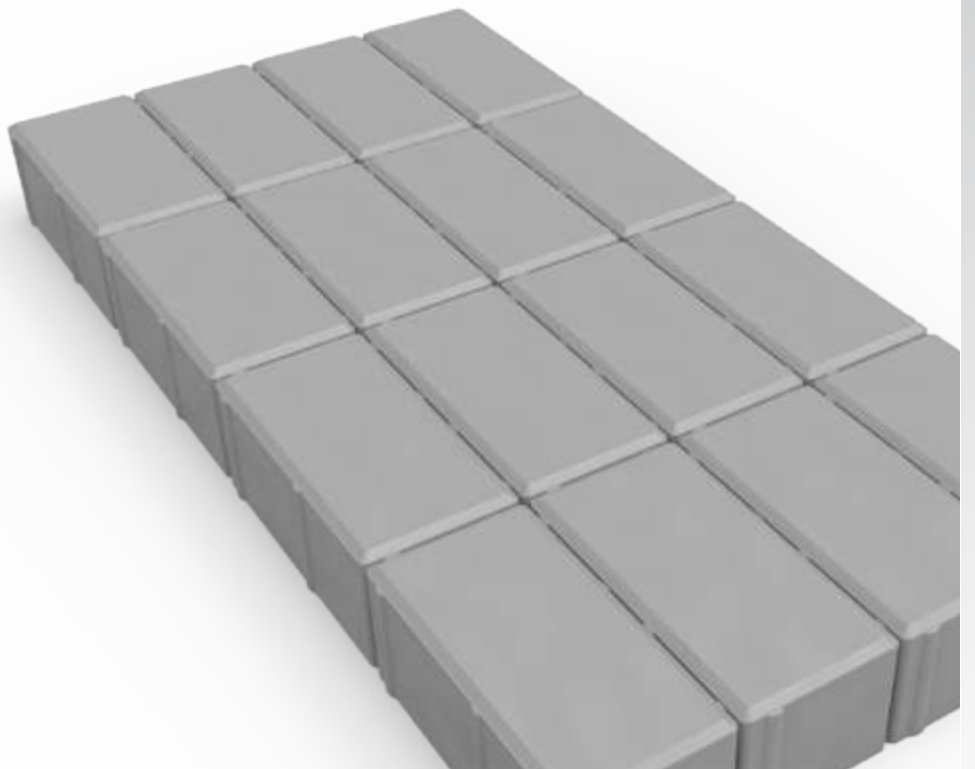
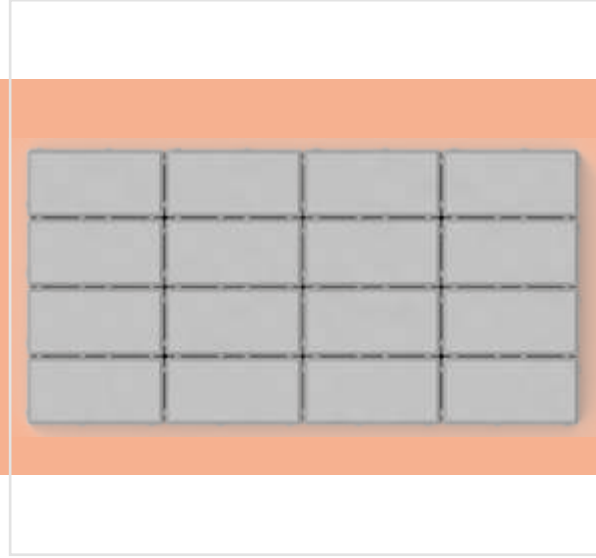
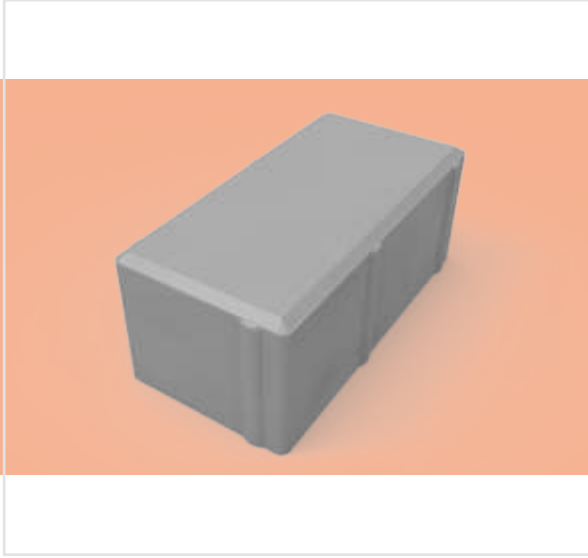
PARKE TAŐI / PAVING STONE

Ürün Kodu Product Code	Ölçüler (mm) Dimensions (mm)	Birim Alan (dm ²) Unit Area (dm ²)	Adet / (m ²) Unit / (m ²)
K1010	100 x 100	1	100



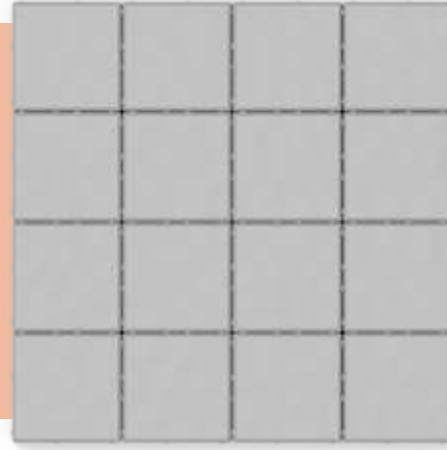
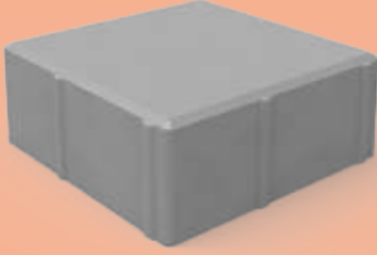
PARKE TAŐI / PAVING STONE

Ürün Kodu Product Code	Ölçüler (mm) Dimensions (mm)	Birim Alan (dm ²) Unit Area (dm ²)	Adet / (m ²) Unit / (m ²)
K1012	100 x 200	2	50



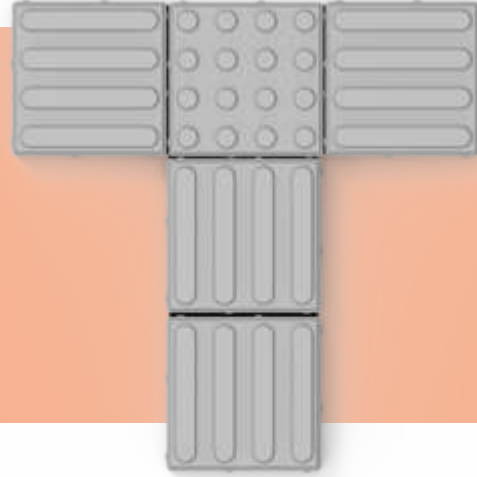
PARKE TAŐI / PAVING STONE

Ürün Kodu Product Code	Ölçüler (mm) Dimensions (mm)	Birim Alan (dm ²) Unit Area (dm ²)	Adet / (m ²) Unit / (m ²)
K1020	200 x 200	4,00	25
K1025	250 x 250	6,25	16
K1030	300 x 300	9,00	11,1
K1040	400 x 400	16	6,2



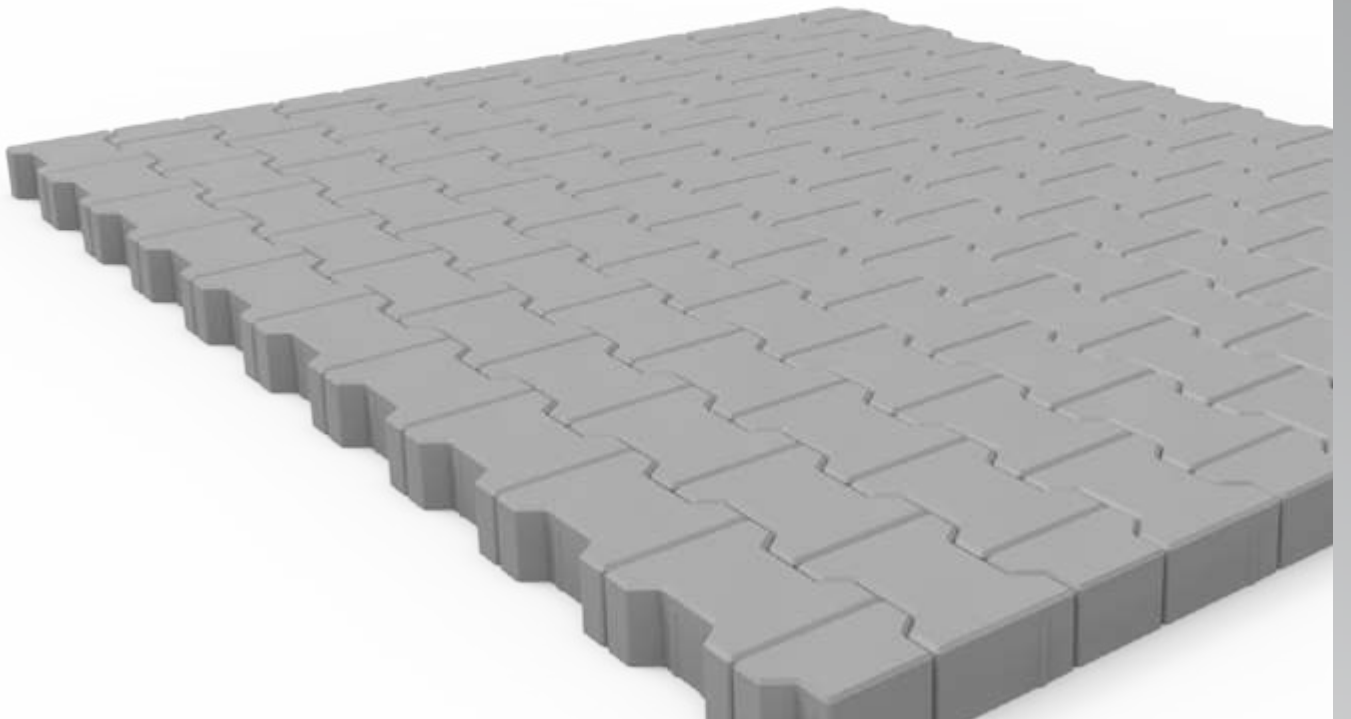
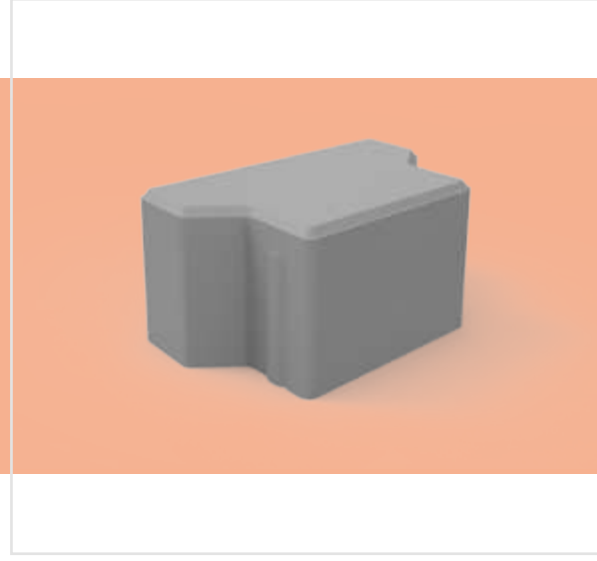
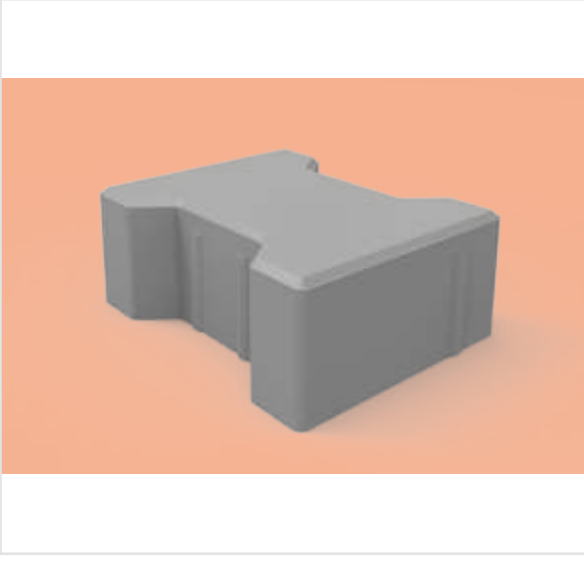
PARKE TAŐI / PAVING STONE

Ürün Kodu Product Code	Ölçüler (mm) Dimensions (mm)	Birim Alan (dm ²) Unit Area (dm ²)	Adet / (m ²) Unit / (m ²)
K1021	200 x 200	4,00	25
K1031	300 x 300	9,00	11,1
K1041	400 x 400	16,00	6,25



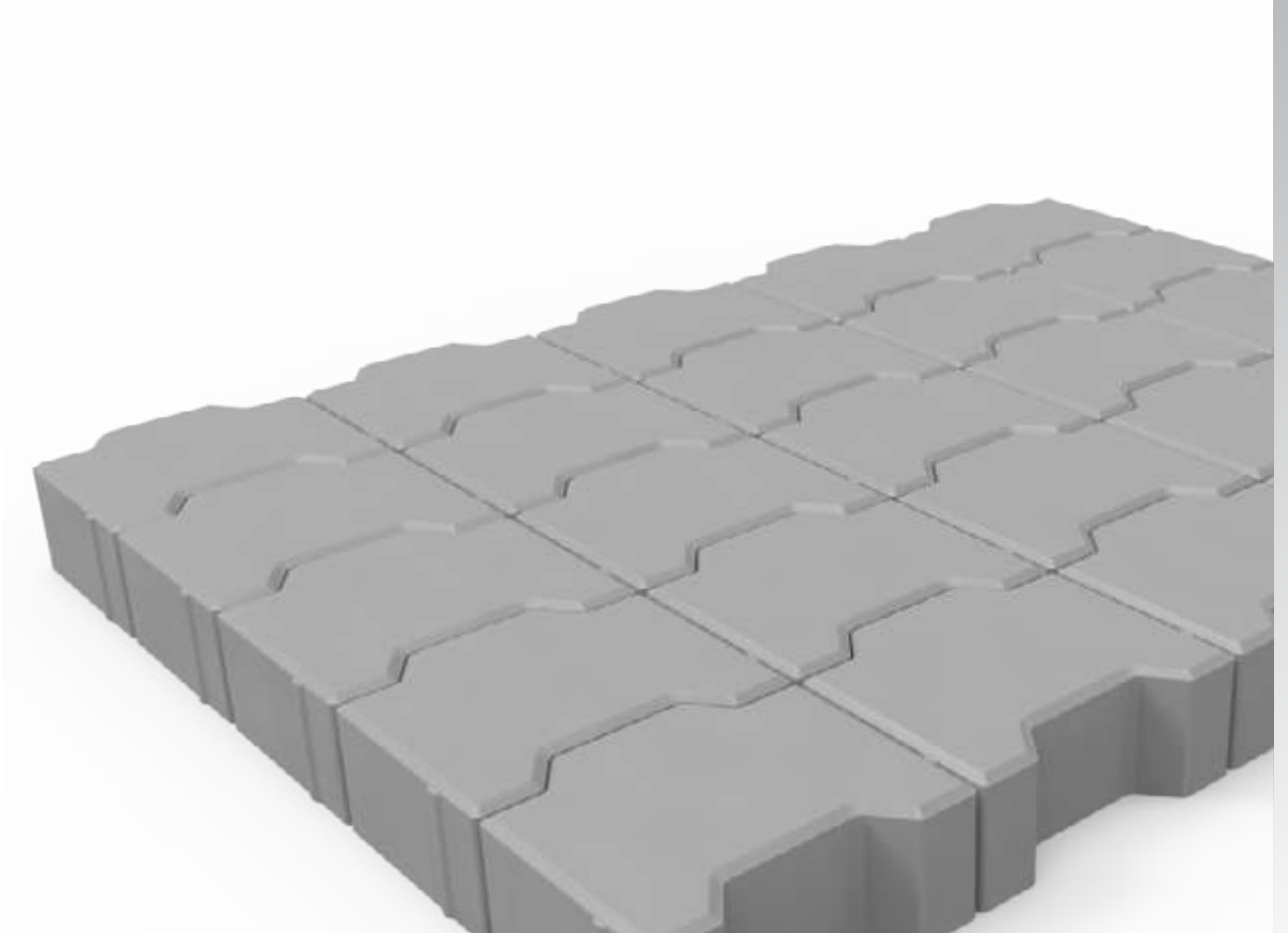
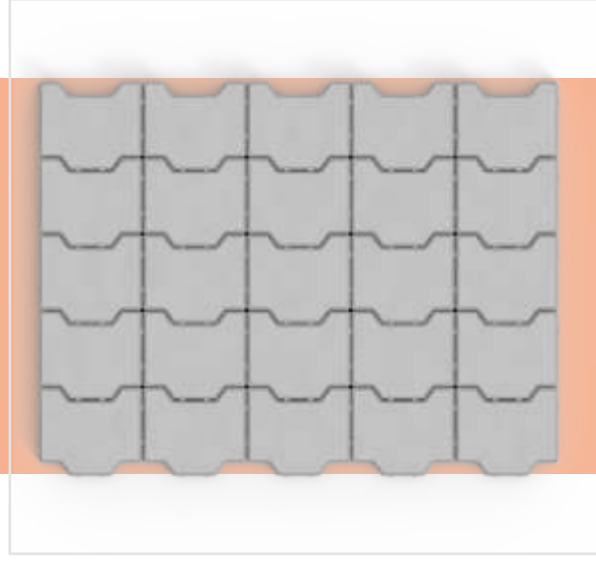
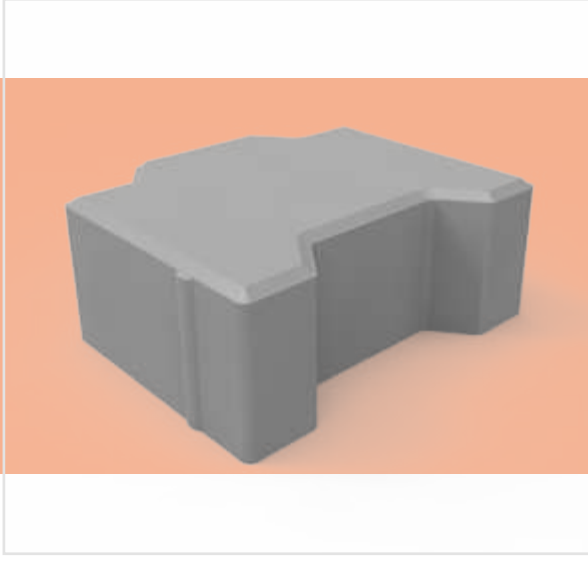
PARKE TAŐI / PAVING STONE

Ürün Kodu Product Code	Ölçüler (mm) Dimensions (mm)	Birim Alan (dm ²) Unit Area (dm ²)	Adet / (m ²) Unit / (m ²)
K1110	200 x 140	2,80	35,7
K1111	100 x 140	1,40	71,4



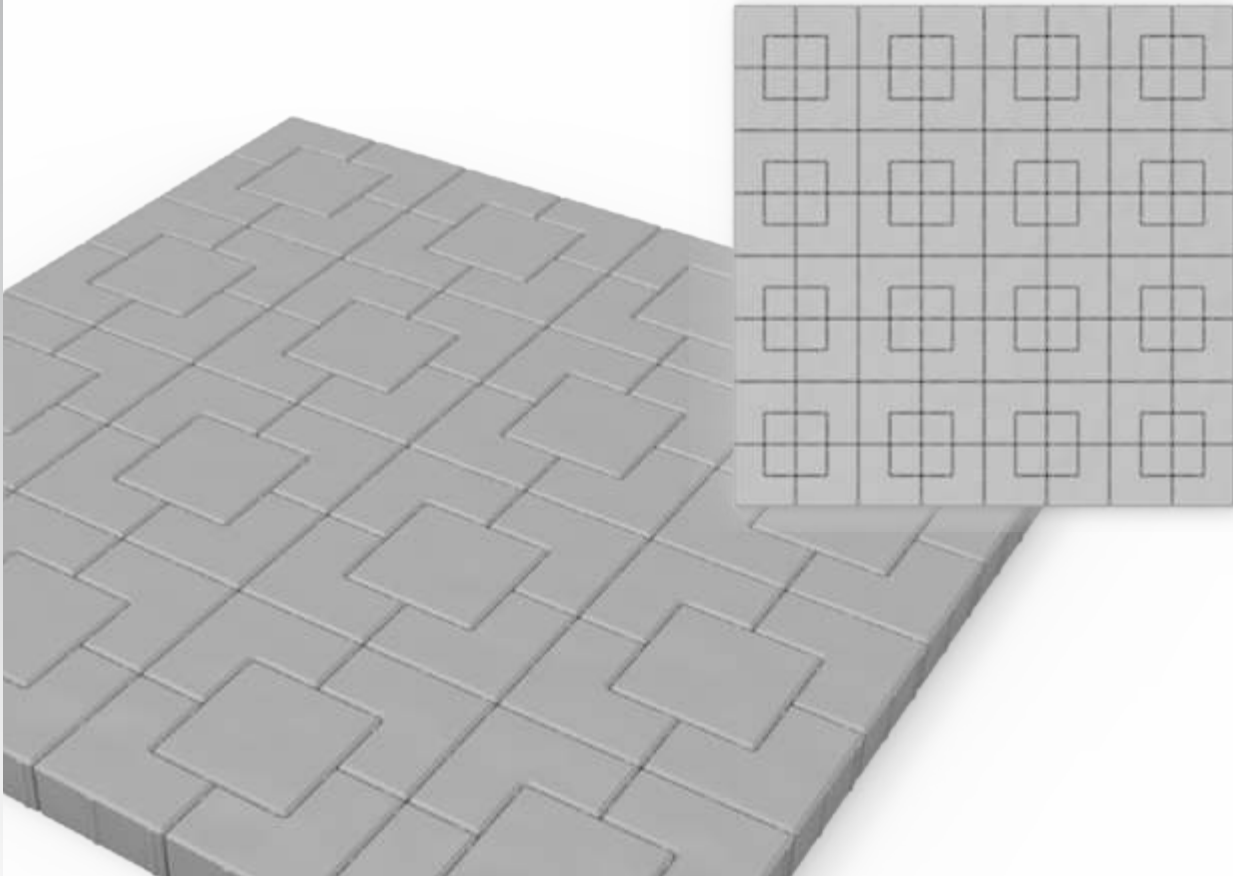
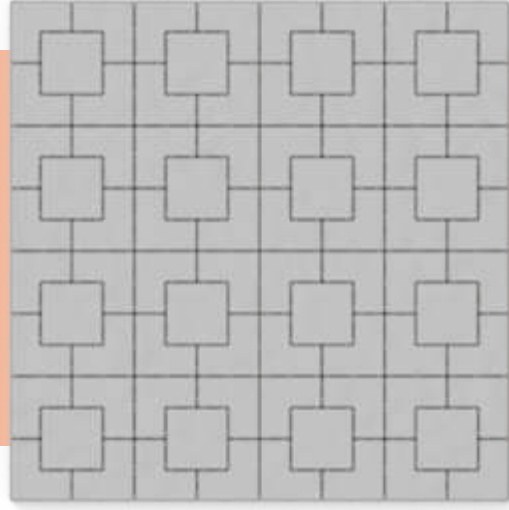
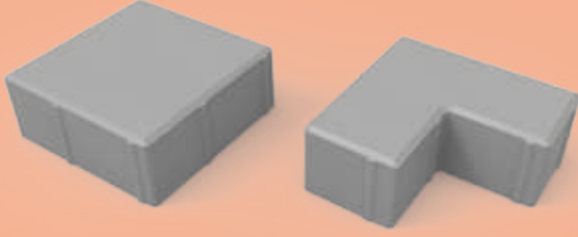
PARKE TAŐI / PAVING STONE

Ürün Kodu Product Code	Ölçüler (mm) Dimensions (mm)	Birim Alan (dm ²) Unit Area (dm ²)	Adet / (m ²) Unit / (m ²)
K1113	200 x 170	3,40	29,5



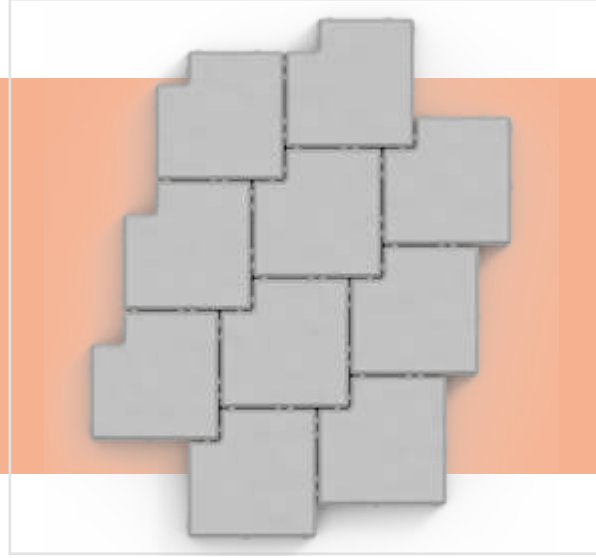
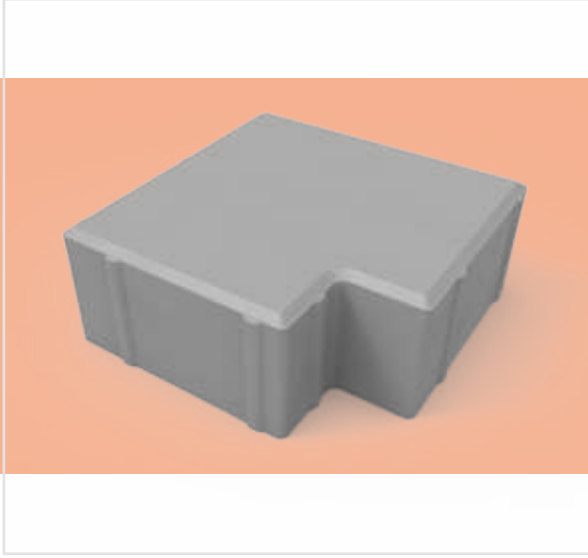
PARKE TAŐI / PAVING STONE

Ürün Kodu Product Code	Ölçüler (mm) Dimensions (mm)	Birim Alan (dm ²) Unit Area (dm ²)	Adet / (m ²) Unit / (m ²)
K1120	200/100 x 200/100	2,60	38,5
K1020	200 x 200	4,00	25
K1010	100 x 100	1	100



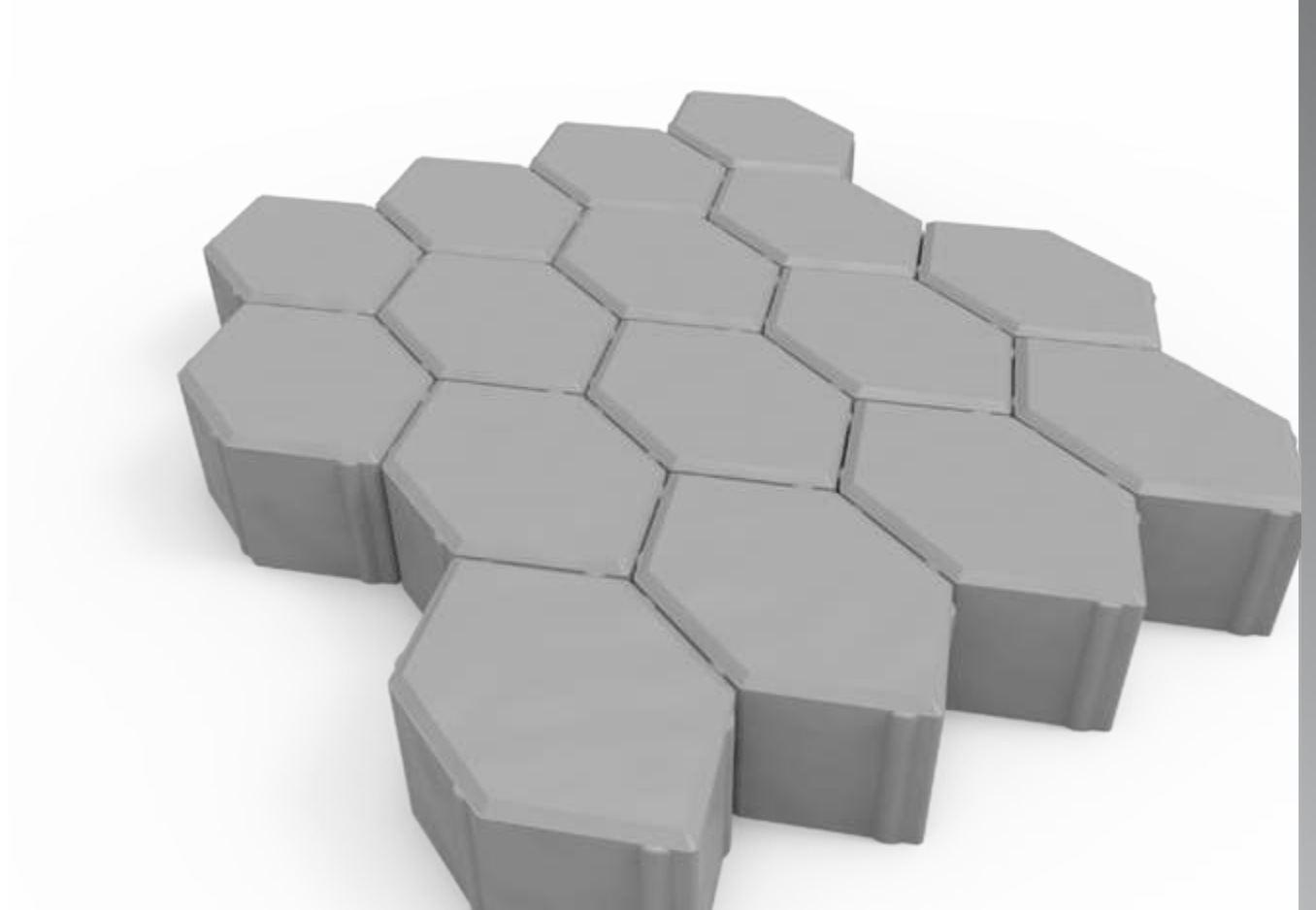
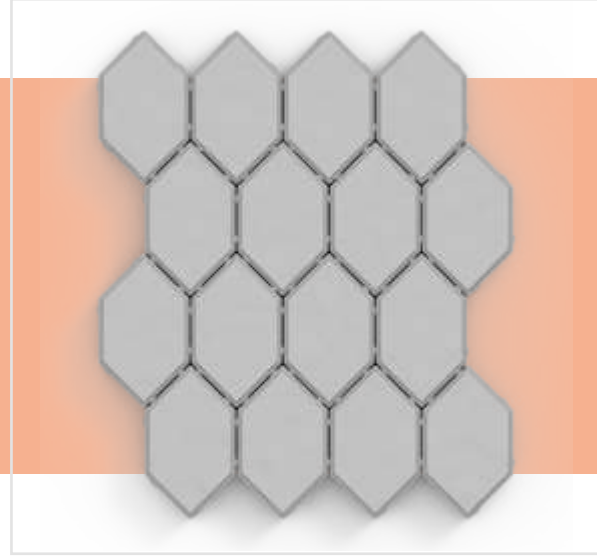
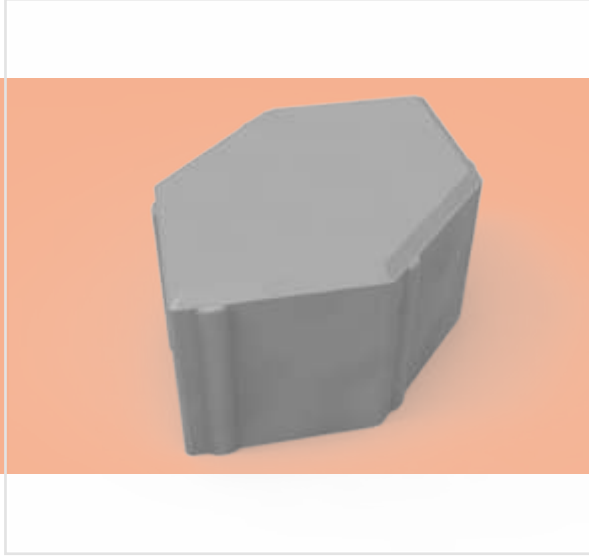
PARKE TAŐI / PAVING STONE

Ürün Kodu Product Code	Ölçüler (mm) Dimensions (mm)	Birim Alan (dm ²) Unit Area (dm ²)	Adet / (m ²) Unit / (m ²)
K1121	200 x 200	4,00	25



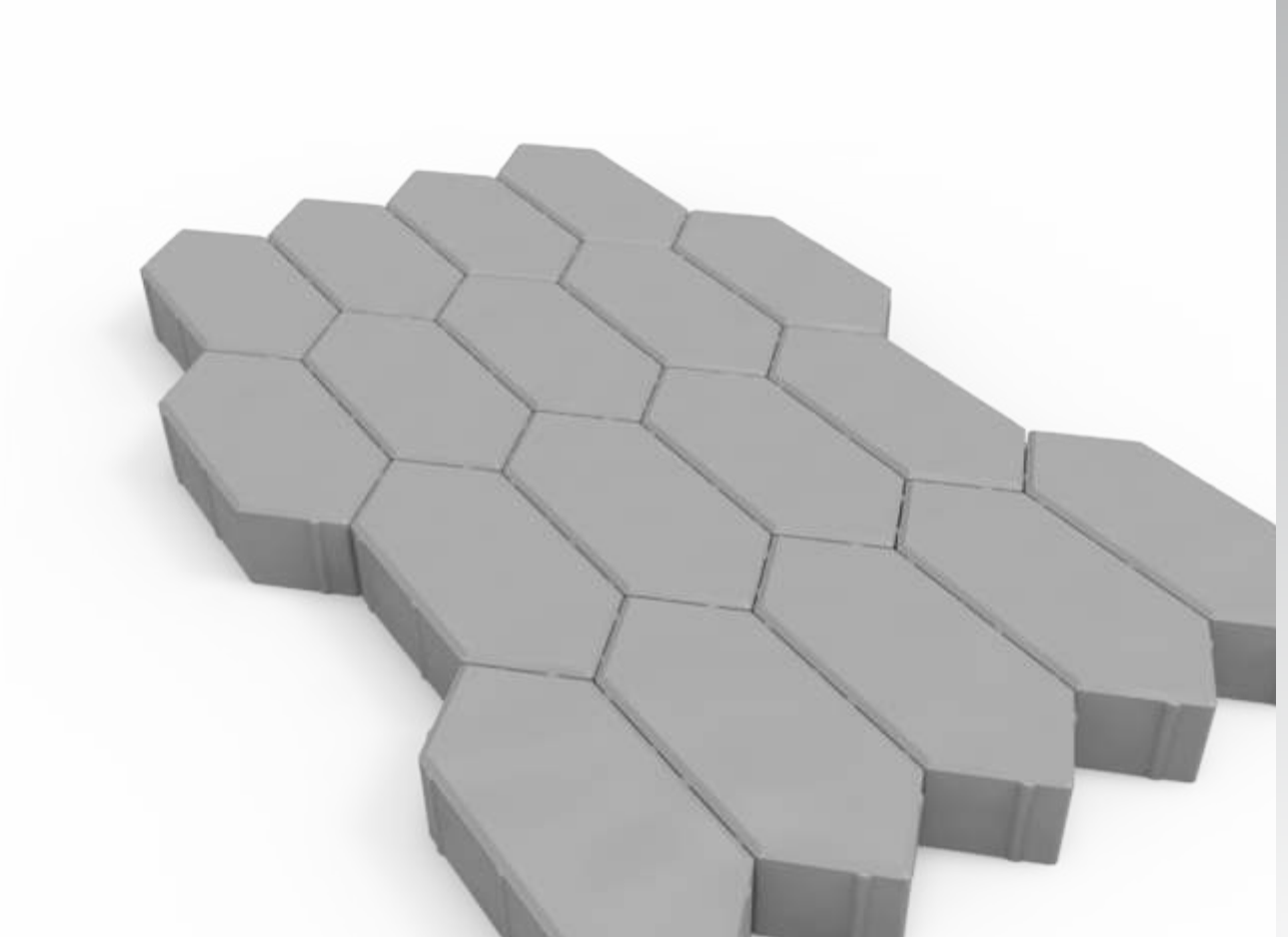
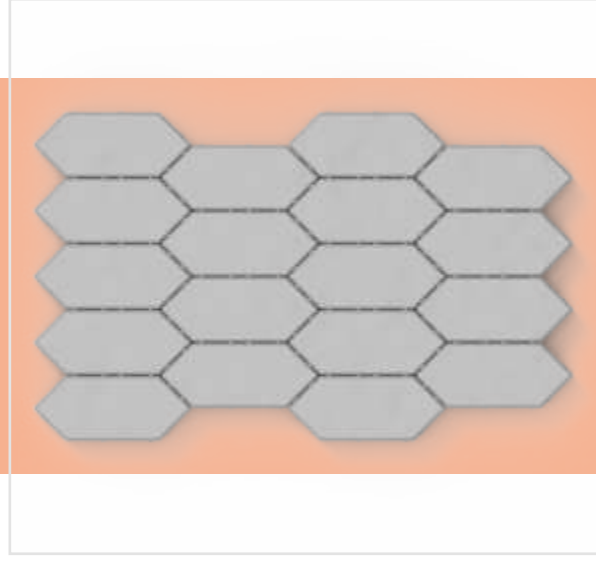
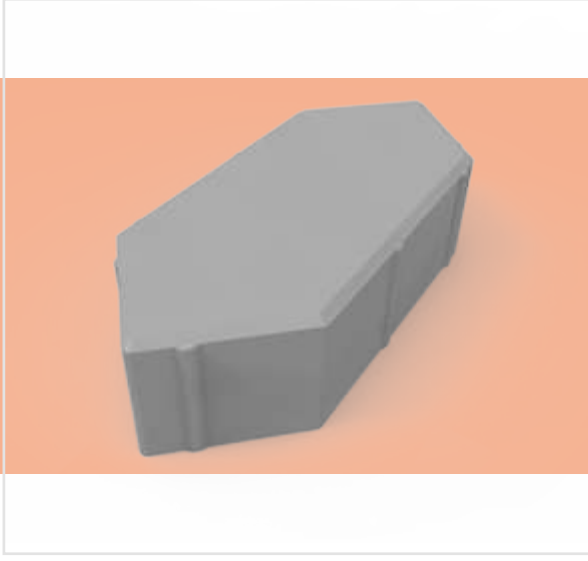
PARKE TAŐI / PAVING STONE

Ürün Kodu Product Code	Ölçüler (mm) Dimensions (mm)	Birim Alan (dm ²) Unit Area (dm ²)	Adet / (m ²) Unit / (m ²)
K1130	141,4 x 117,2	1,66	60,3



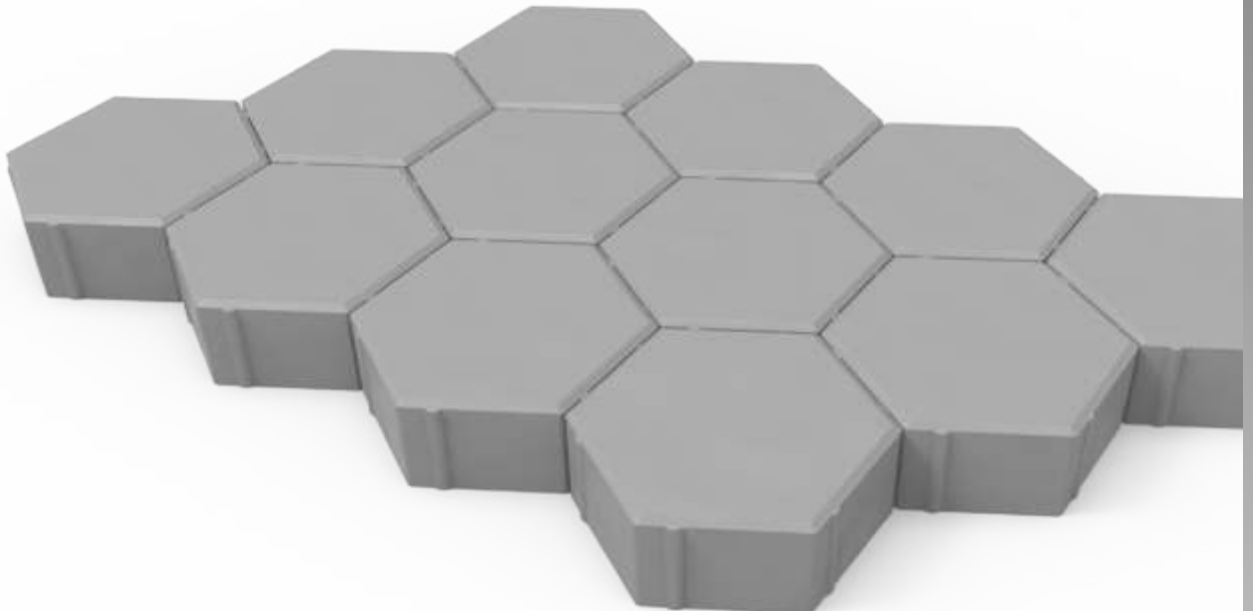
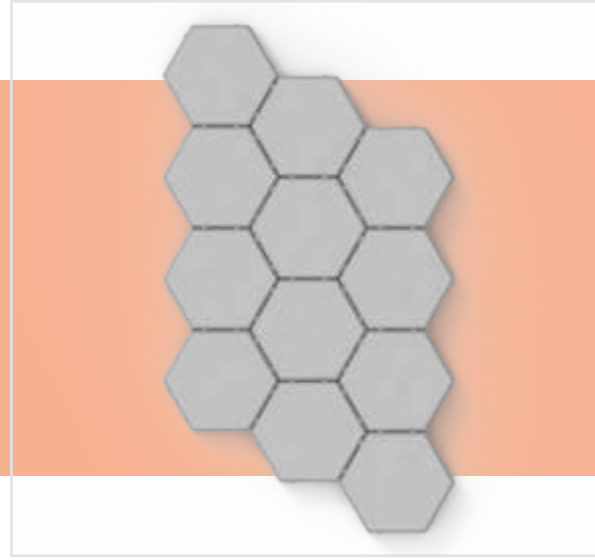
PARKE TAŐI / PAVING STONE

Ürün Kodu Product Code	Ölçüler (mm) Dimensions (mm)	Birim Alan (dm ²) Unit Area (dm ²)	Adet / (m ²) Unit / (m ²)
K1131	140 x 333	4,66	21,4



PARKE TAŐI / PAVING STONE

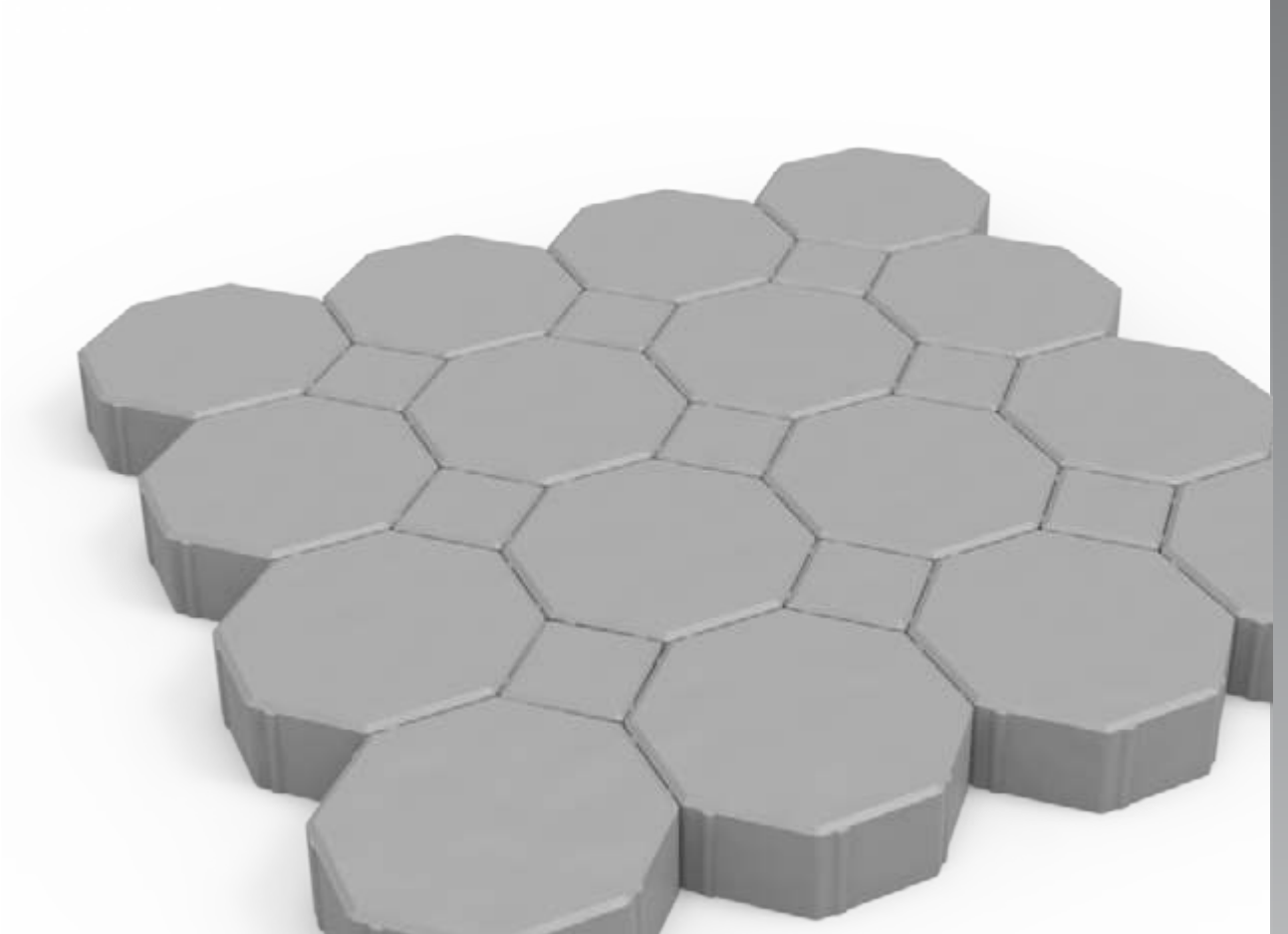
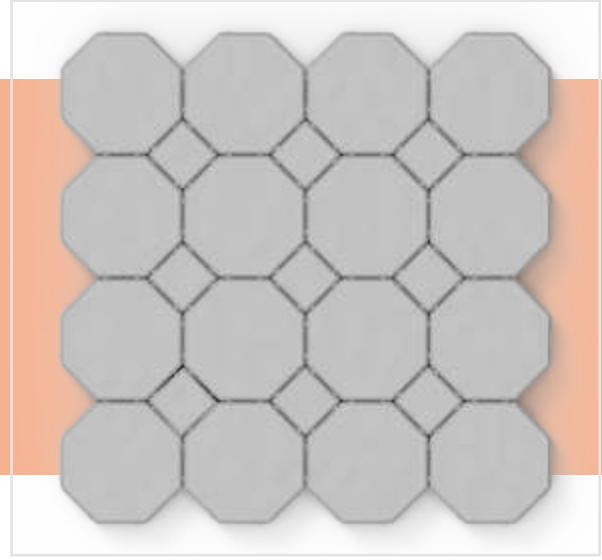
Ürün Kodu Product Code	Ölçüler (mm) Dimensions (mm)	Birim Alan (dm ²) Unit Area (dm ²)	Adet / (m ²) Unit / (m ²)
K1132	210 x 173,3	3,46	28,9





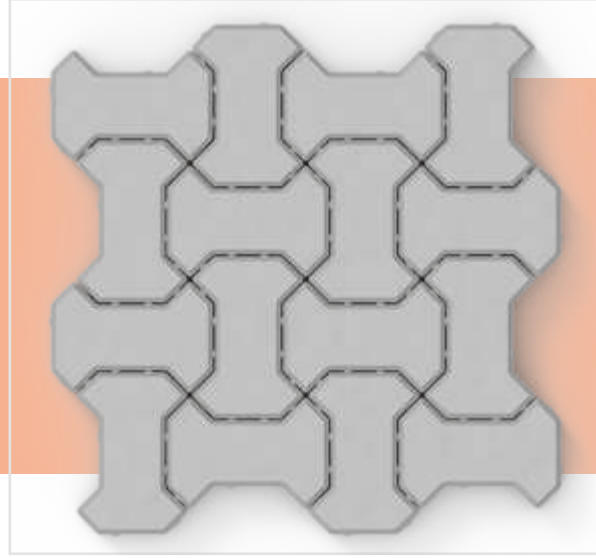
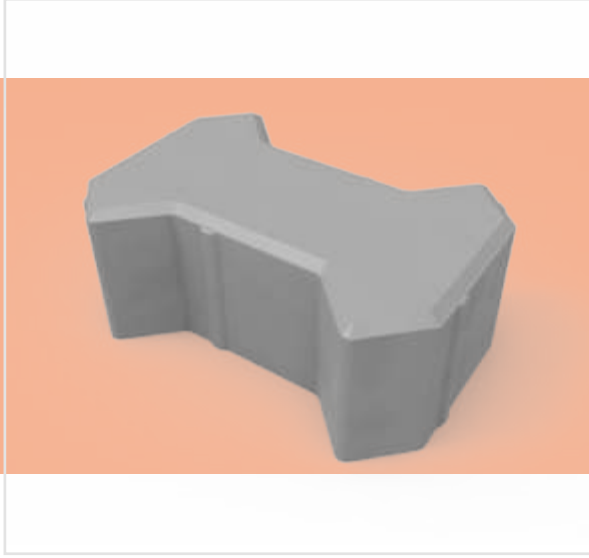
PARKE TAŐI / PAVING STONE

Ürün Kodu Product Code	Ölçüler (mm) Dimensions (mm)	Birim Alan (dm ²) Unit Area (dm ²)	Adet / (m ²) Unit / (m ²)
K1140	200 x 200	3,32	25



PARKE TAŐI / PAVING STONE

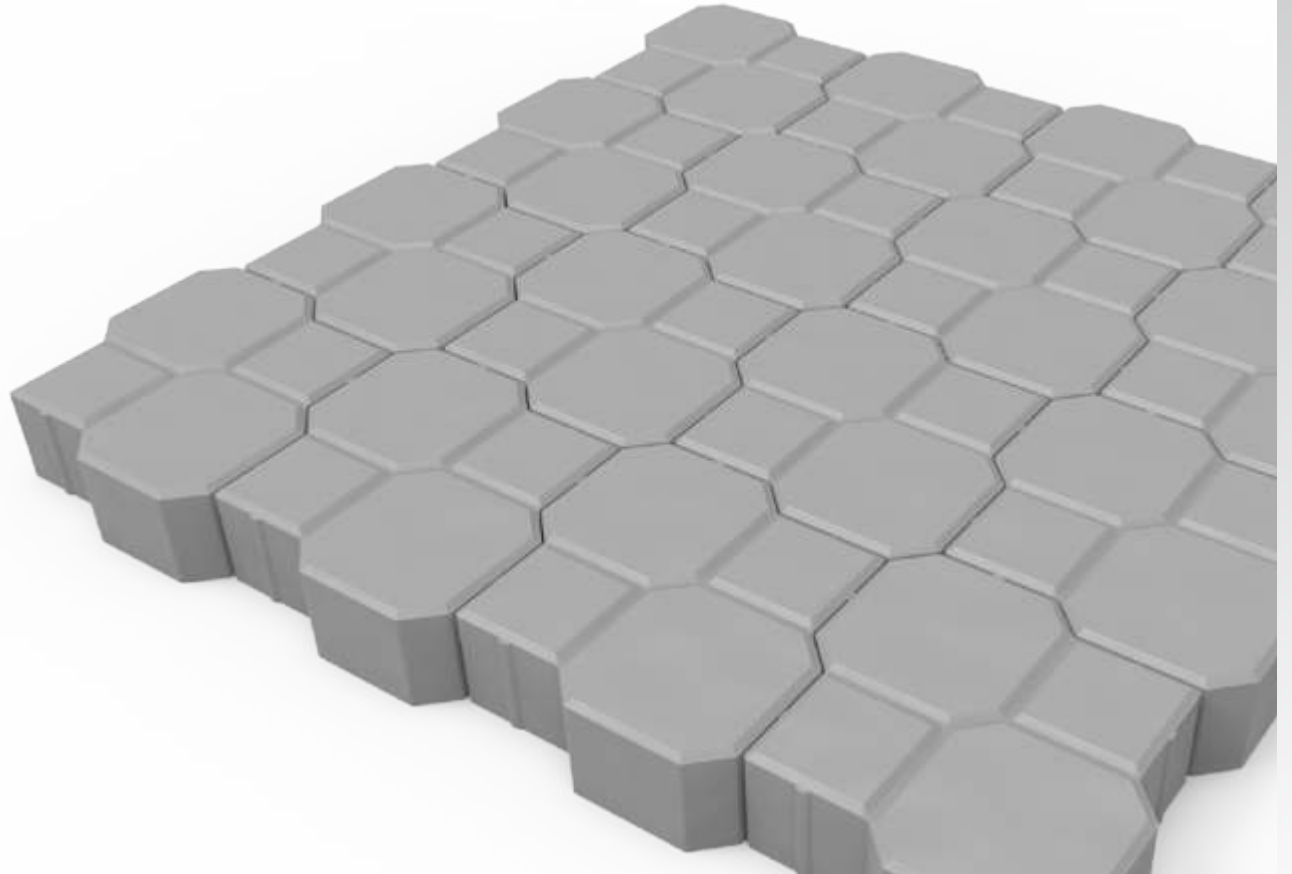
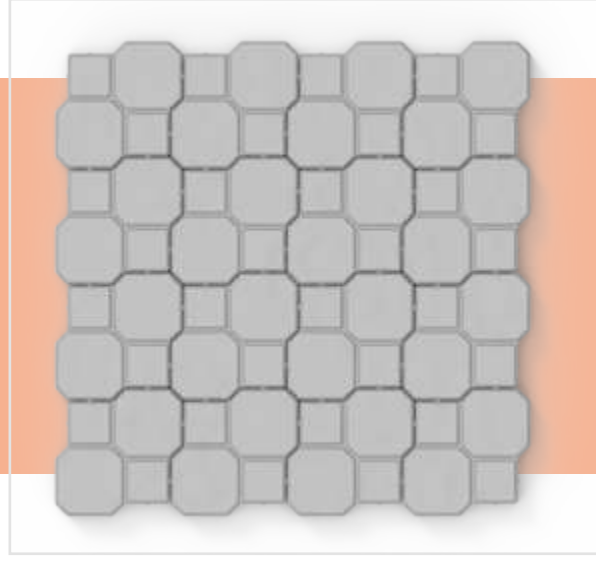
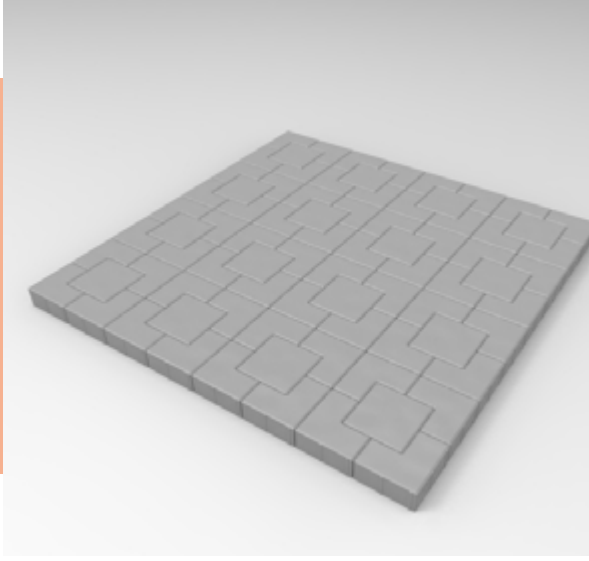
Ürün Kodu Product Code	Ölçüler (mm) Dimensions (mm)	Birim Alan (dm ²) Unit Area (dm ²)	Adet / (m ²) Unit / (m ²)
K1150	141,4 x 141,4	2	50





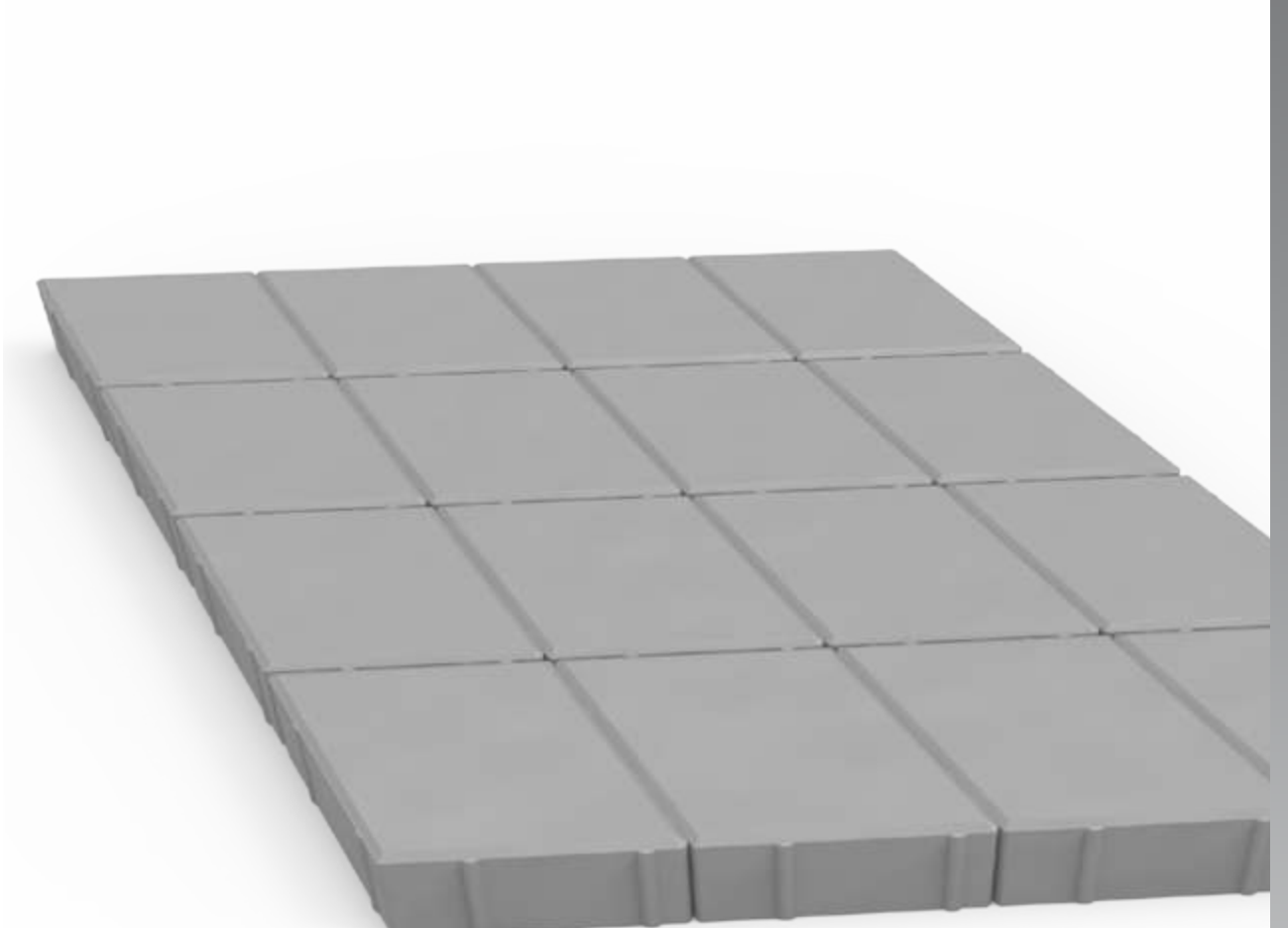
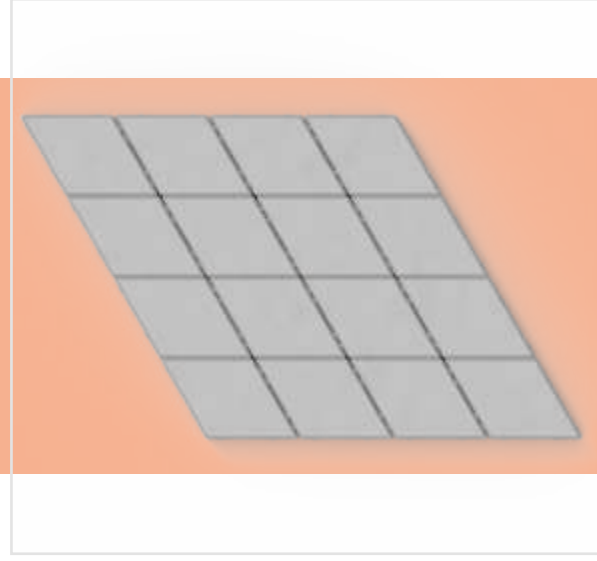
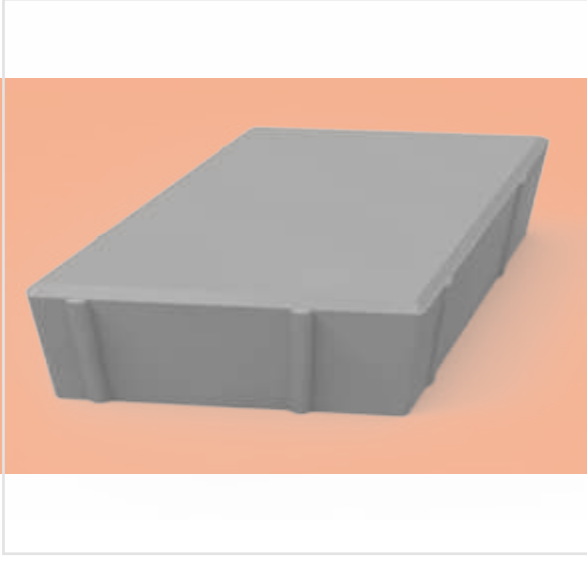
PARKE TAŐI / PAVING STONE

Ürün Kodu Product Code	Ölçüler (mm) Dimensions (mm)	Birim Alan (dm ²) Unit Area (dm ²)	Adet / (m ²) Unit / (m ²)
K1160	230 x 115	2,65	37,8



PARKE TAŐI / PAVING STONE

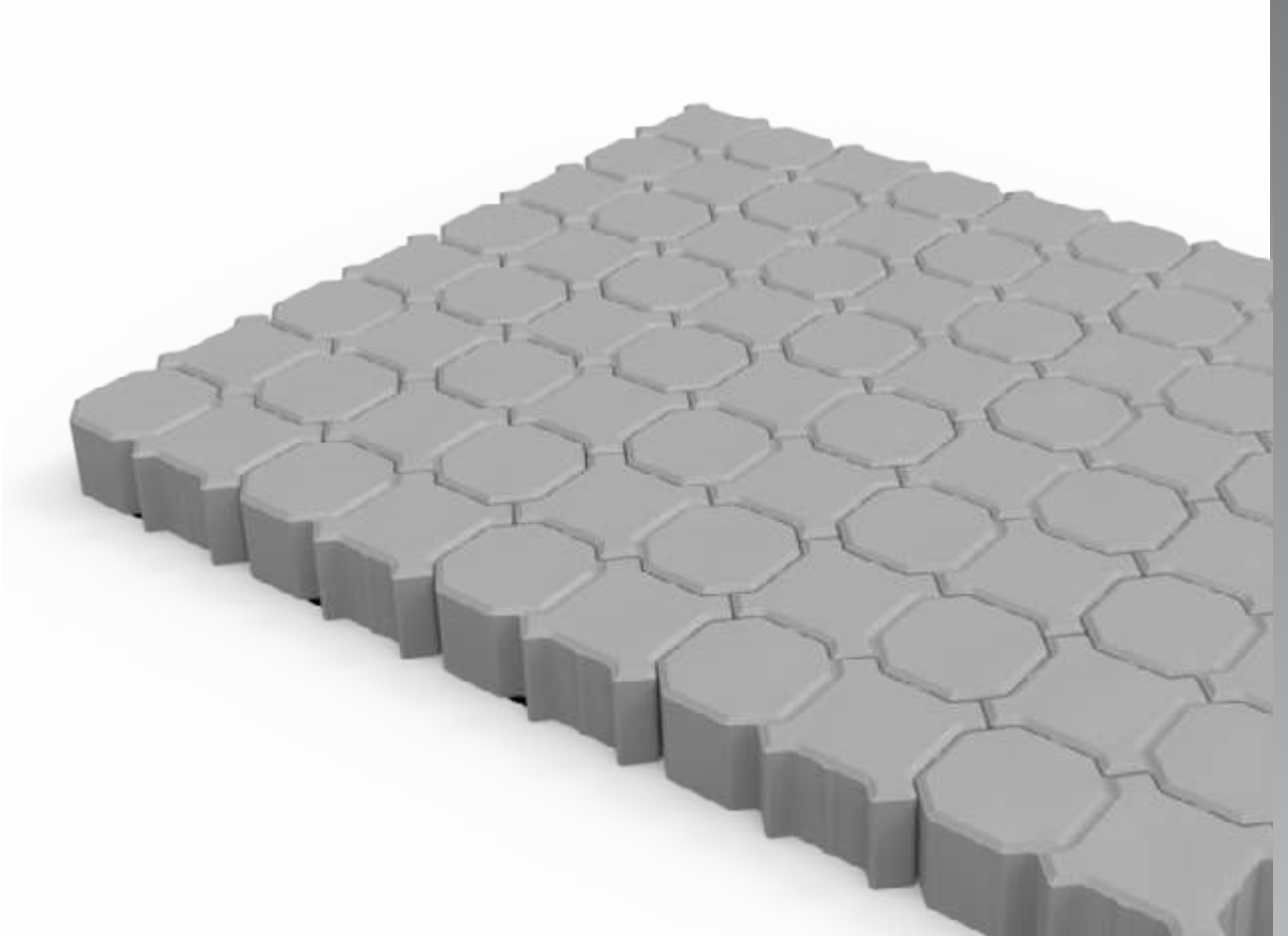
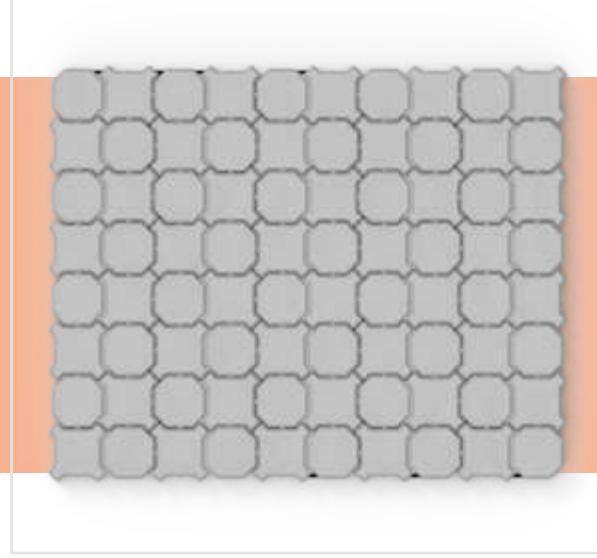
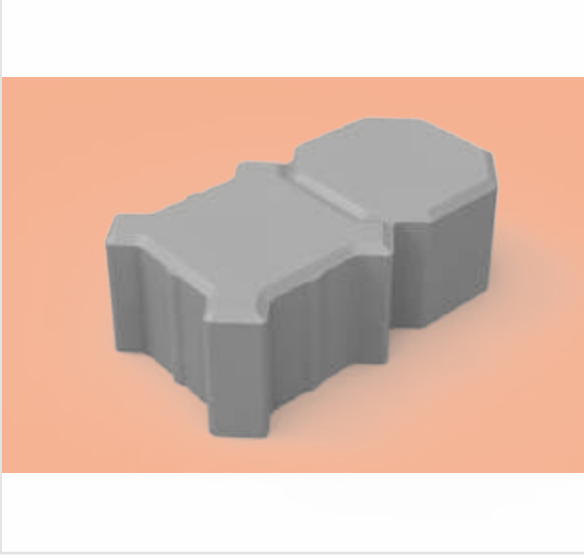
Ürün Kodu Product Code	Ölçüler (mm) Dimensions (mm)	Birim Alan (dm ²) Unit Area (dm ²)	Adet / (m ²) Unit / (m ²)
K1180	150 x 129,9	1,95	51,3





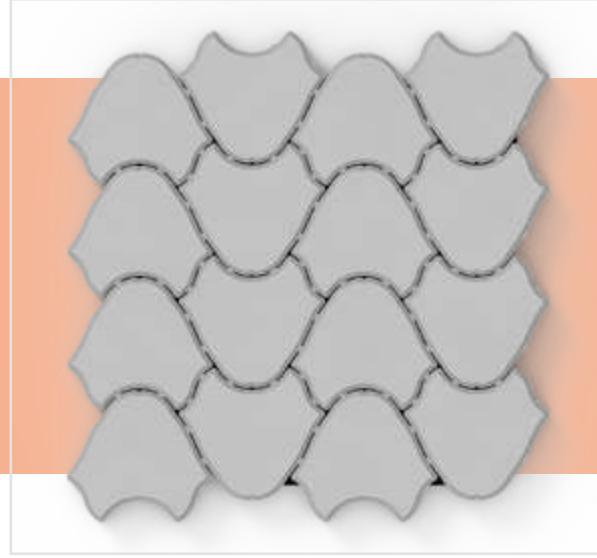
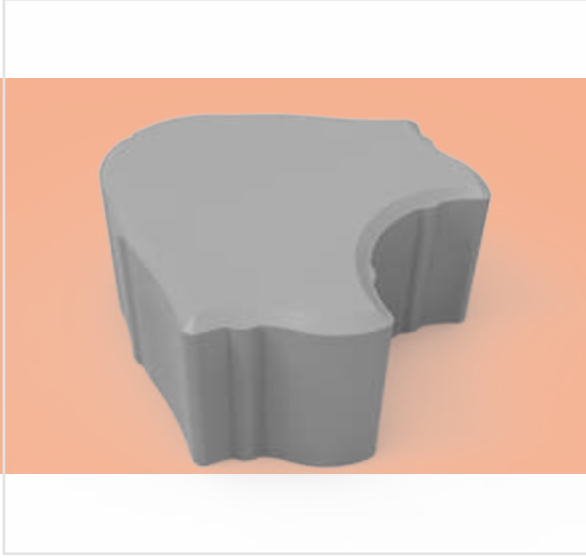
PARKE TAŐI / PAVING STONE

Ürün Kodu Product Code	Ölçüler (mm) Dimensions (mm)	Birim Alan (dm ²) Unit Area (dm ²)	Adet / (m ²) Unit / (m ²)
K1190	230 x 110	2,53	39,5



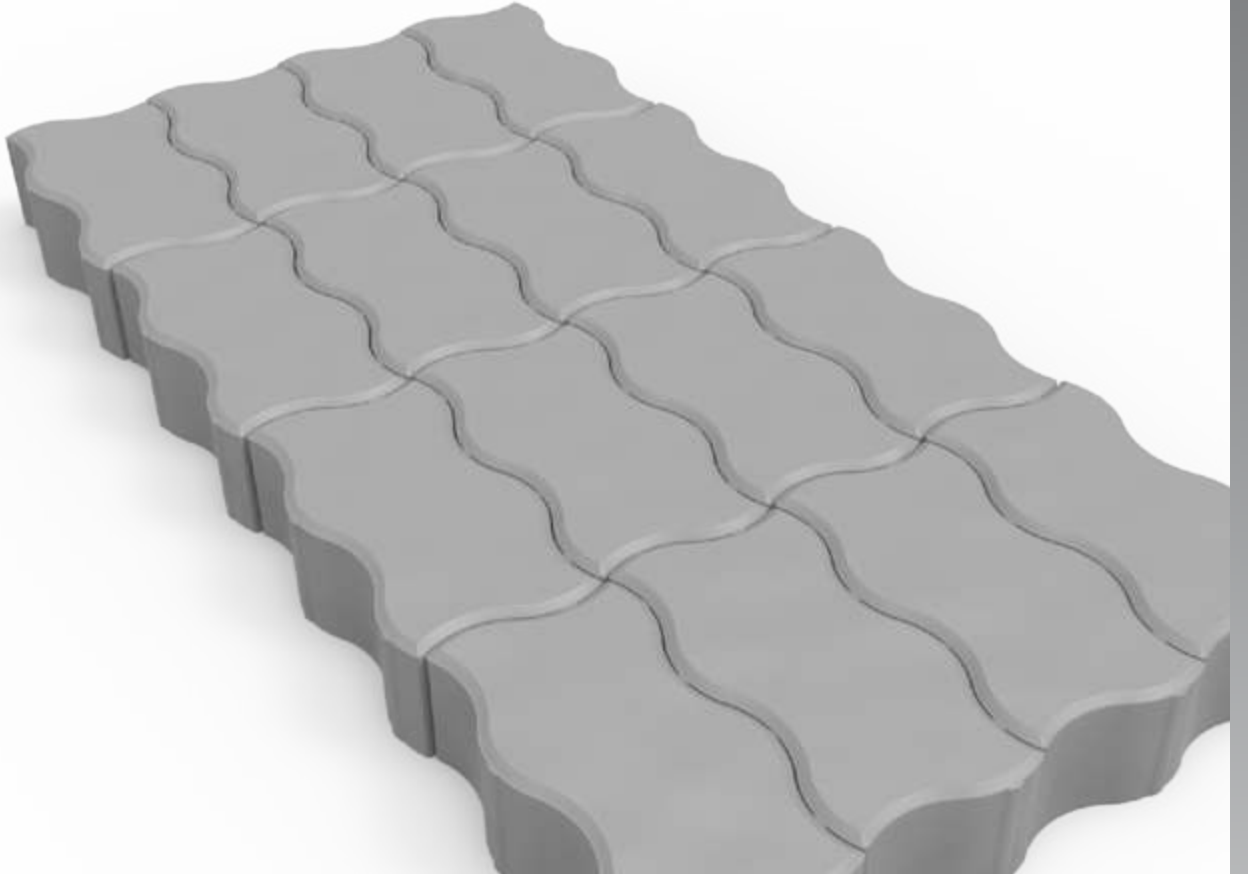
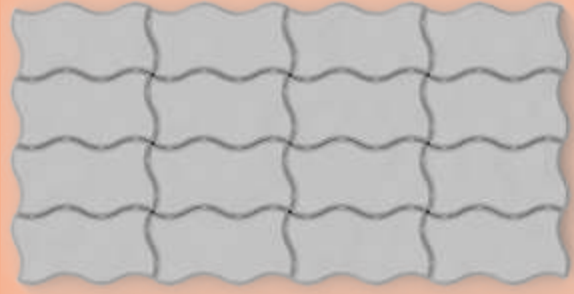
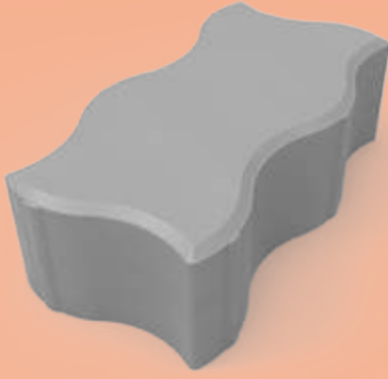
PARKE TAŐI / PAVING STONE

Ürün Kodu Product Code	Ölçüler (mm) Dimensions (mm)	Birim Alan (dm ²) Unit Area (dm ²)	Adet / (m ²) Unit / (m ²)
K1200	147 x 147	2,16	46,3



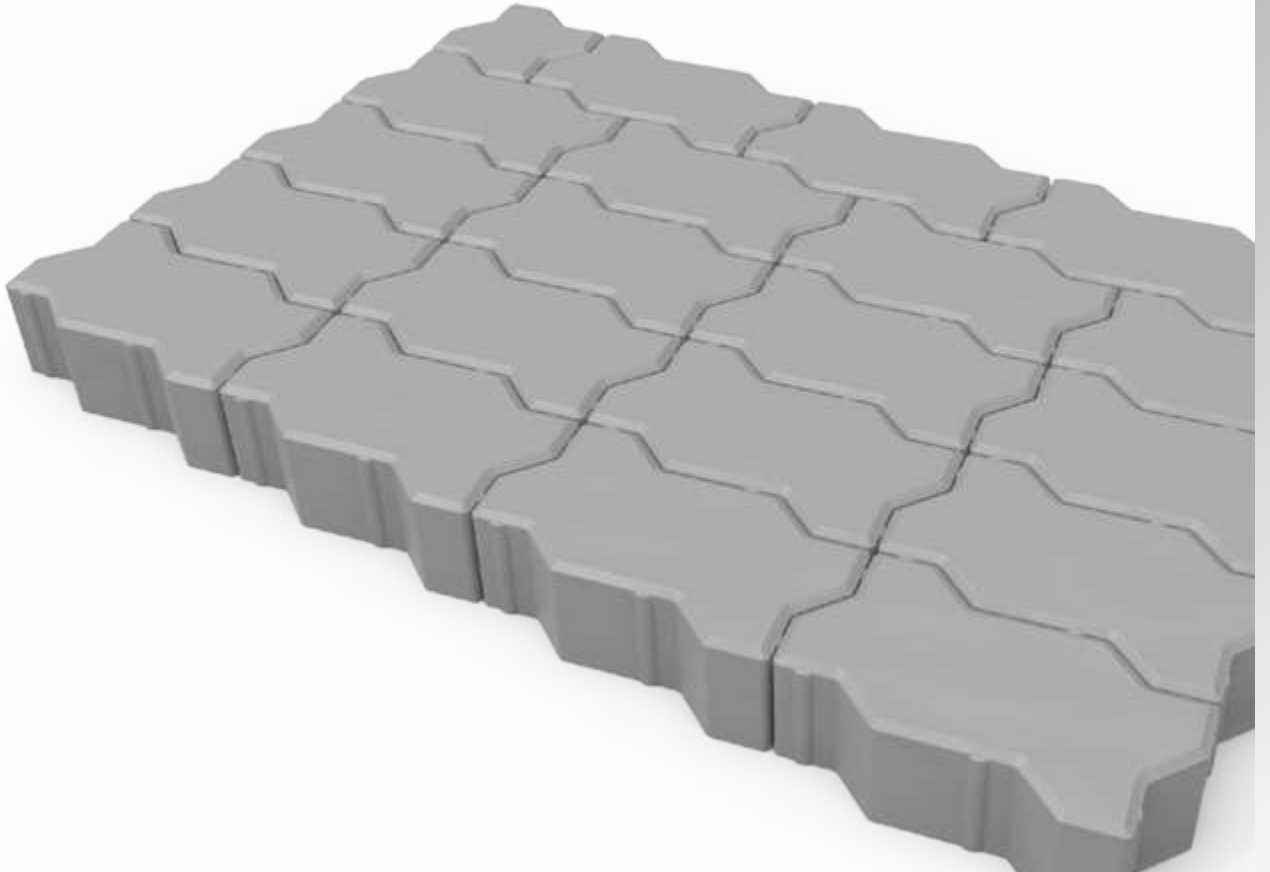
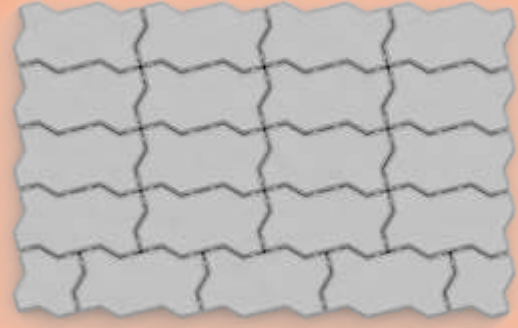
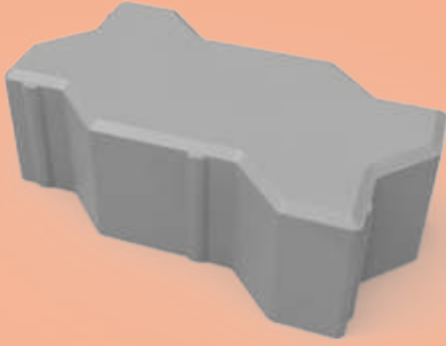
PARKE TAŐI / PAVING STONE

Ürün Kodu Product Code	Ölçüler (mm) Dimensions (mm)	Birim Alan (dm ²) Unit Area (dm ²)	Adet / (m ²) Unit / (m ²)
K1210	240 x 120	2,88	34,7



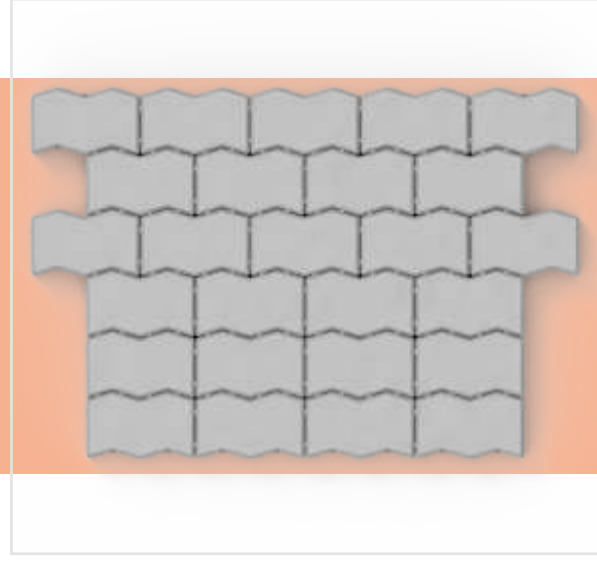
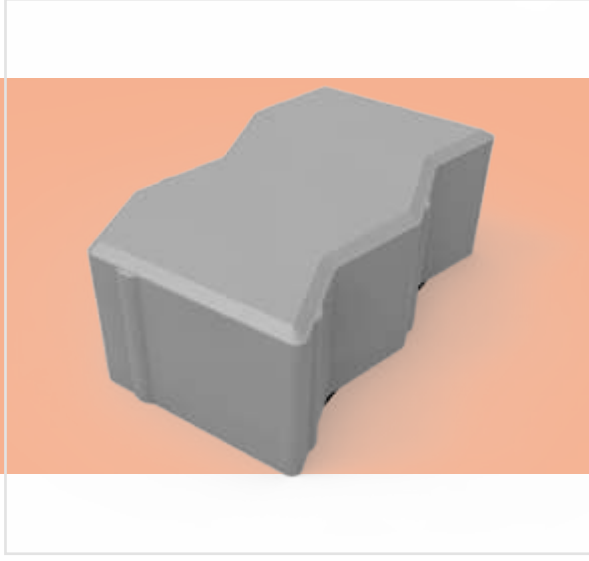
PARKE TAŐI / PAVING STONE

Ürün Kodu Product Code	Ölçüler (mm) Dimensions (mm)	Birim Alan (dm ²) Unit Area (dm ²)	Adet / (m ²) Unit / (m ²)
K1211	225 x 112,5	2,53	39,5



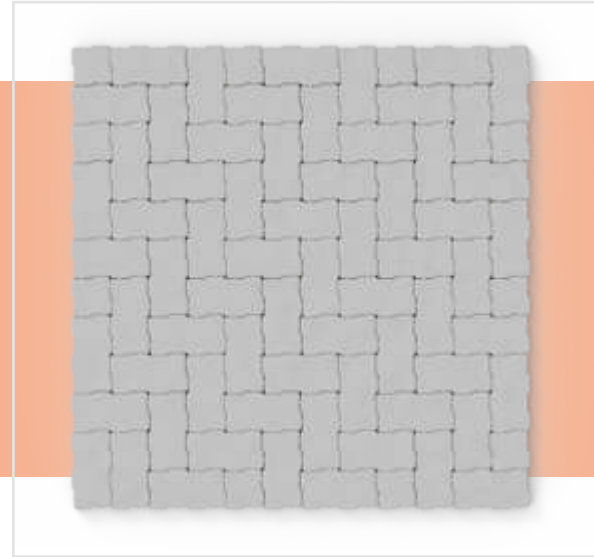
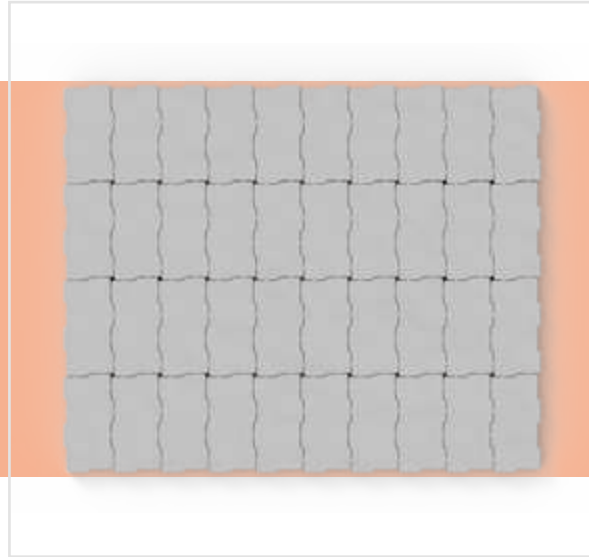
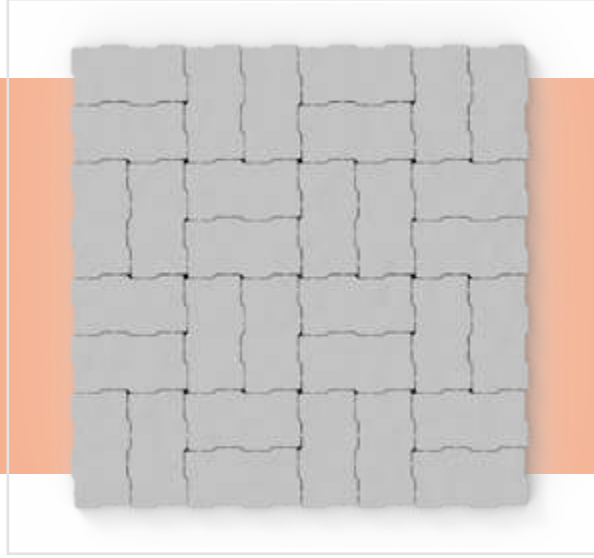
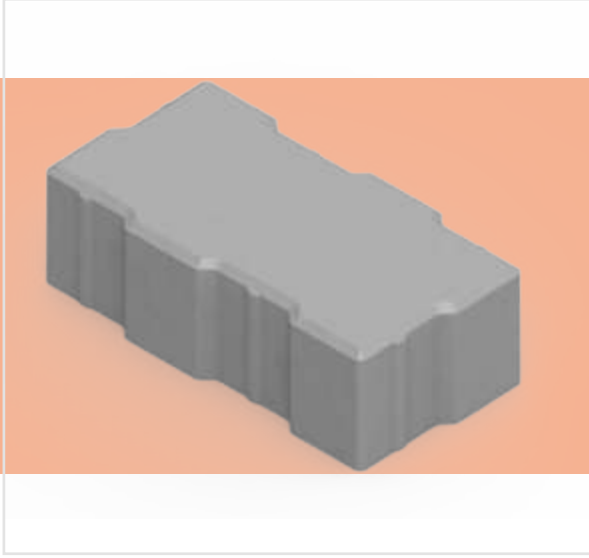
PARKE TAŐI / PAVING STONE

Ürün Kodu Product Code	Ölçüler (mm) Dimensions (mm)	Birim Alan (dm ²) Unit Area (dm ²)	Adet / (m ²) Unit / (m ²)
K1212	200 x 125	2,50	40



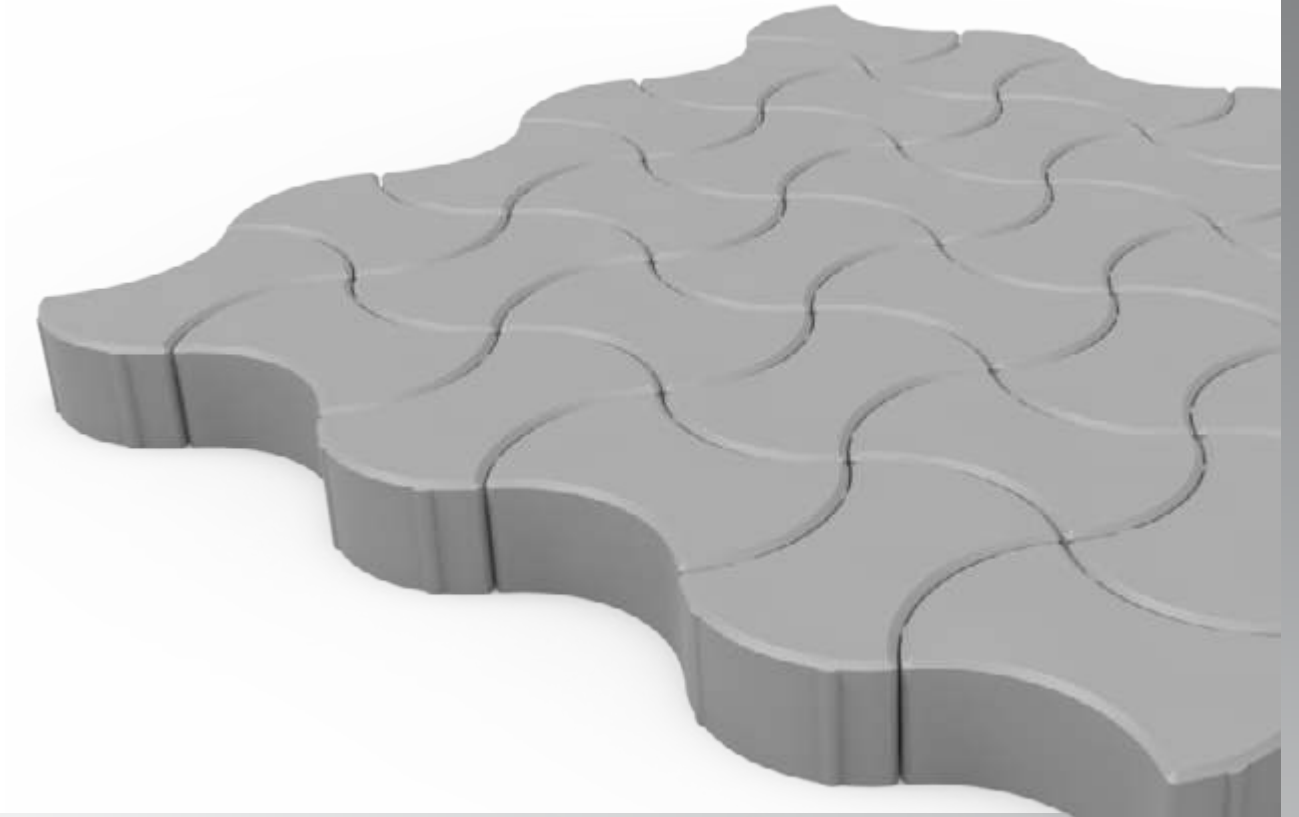
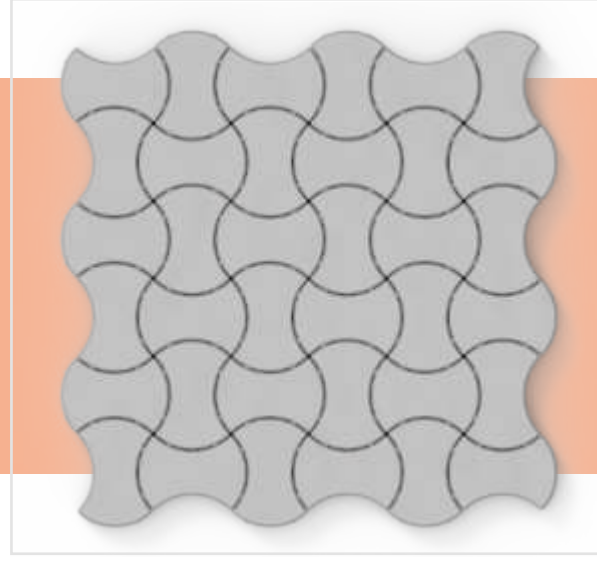
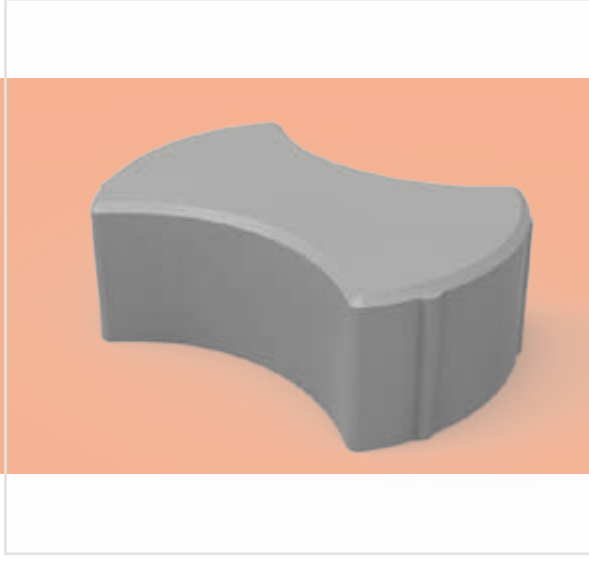
PARKE TAŐI / PAVING STONE

Ürün Kodu Product Code	Ölçüler (mm) Dimensions (mm)	Birim Alan (dm ²) Unit Area (dm ²)	Adet / (m ²) Unit / (m ²)
K1215	250 x 125	3,13	32



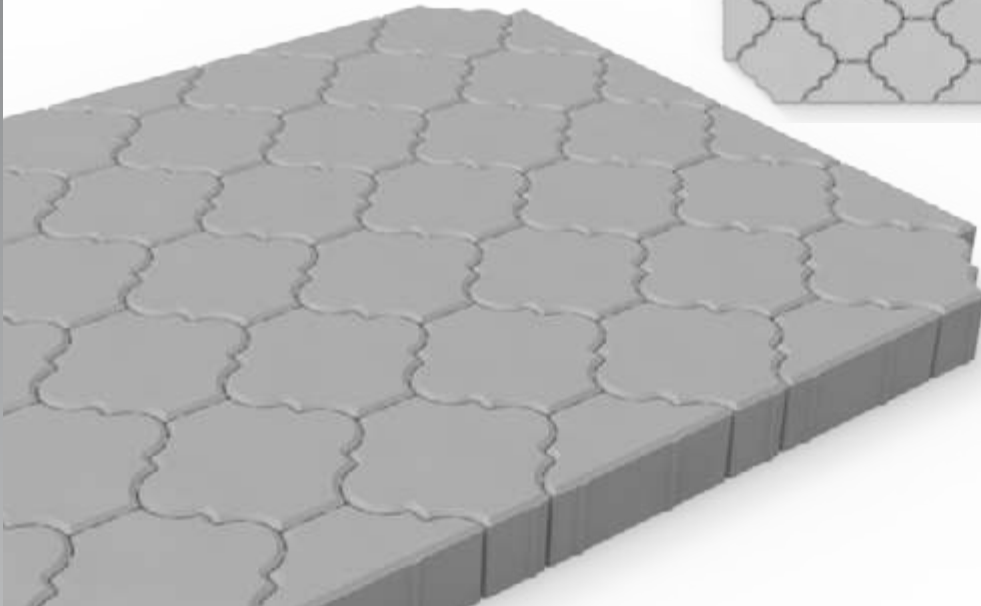
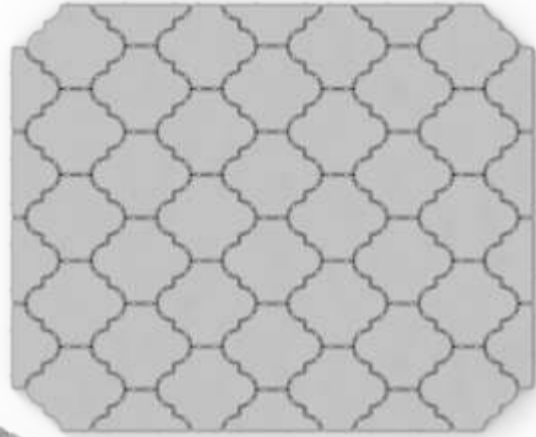
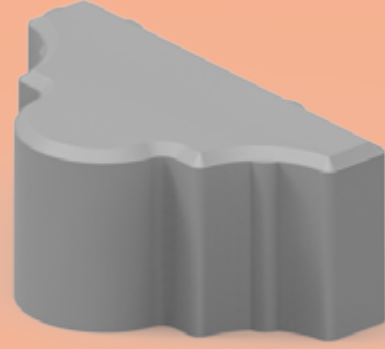
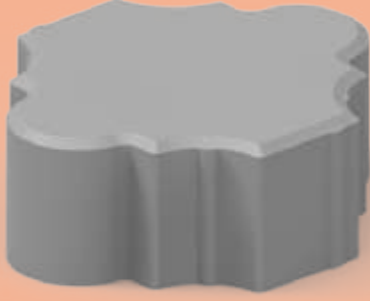
PARKE TAŐI / PAVING STONE

Ürün Kodu Product Code	Ölçüler (mm) Dimensions (mm)	Birim Alan (dm ²) Unit Area (dm ²)	Adet / (m ²) Unit / (m ²)
K1217	224 x 92	2,06	48,5



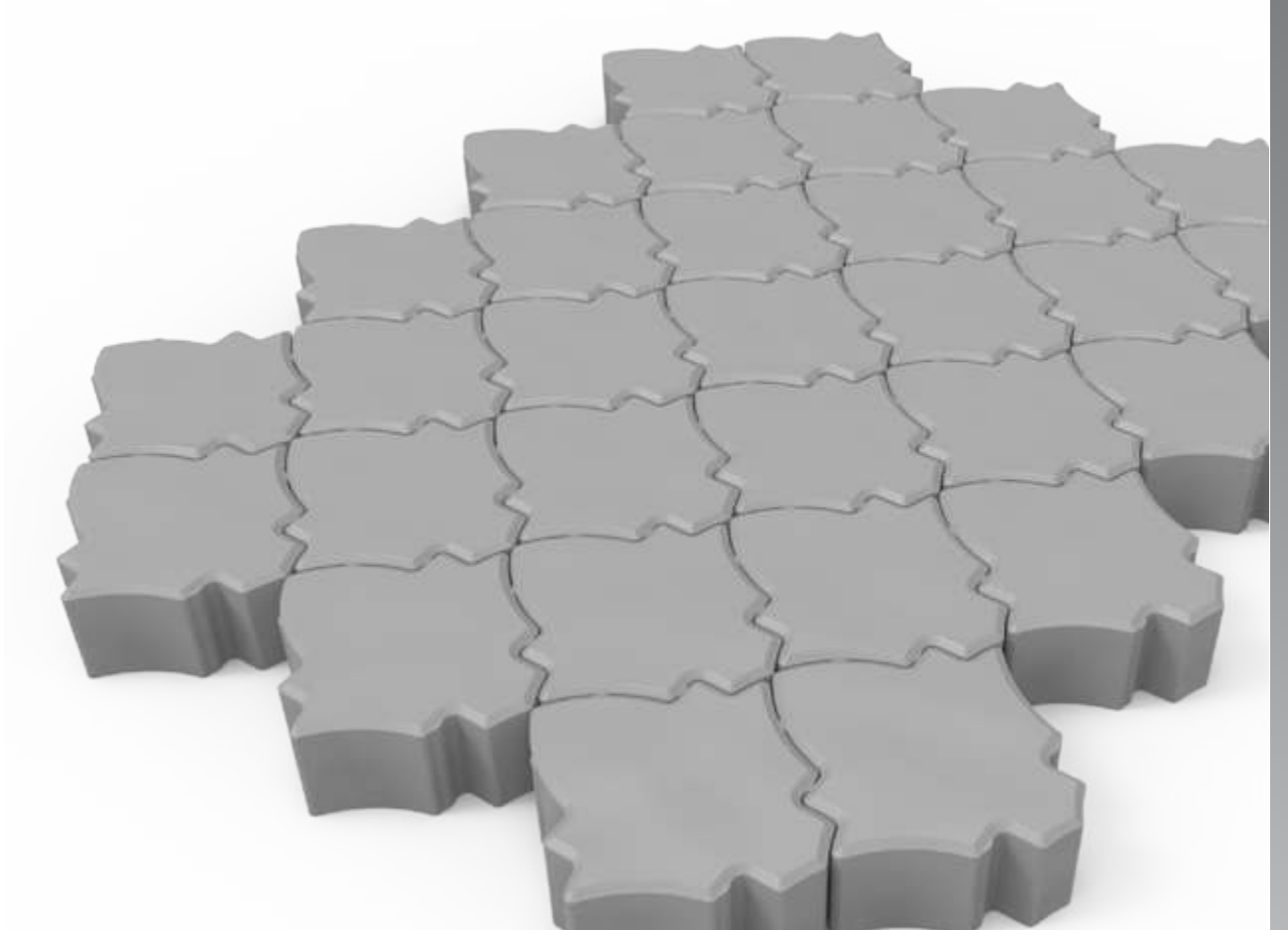
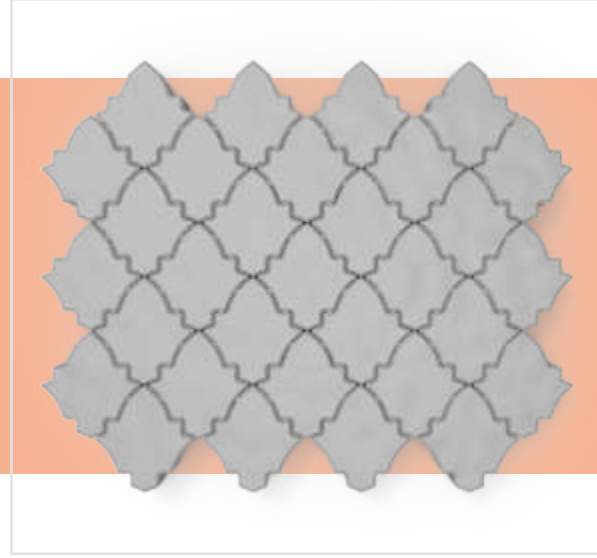
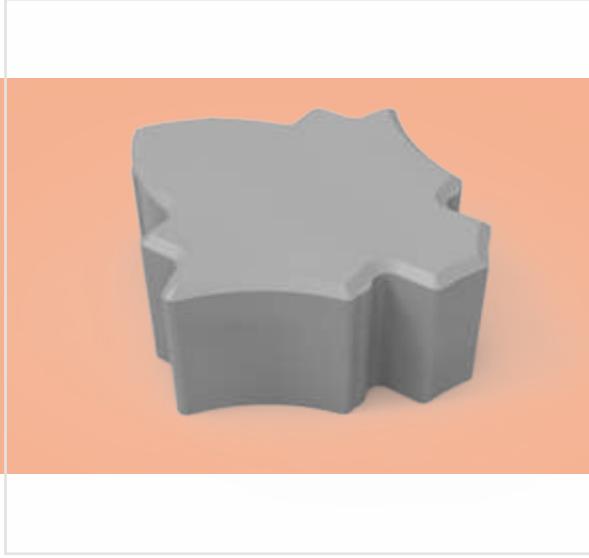
PARKE TAŐI / PAVING STONE

Ürün Kodu Product Code	Ölçüler (mm) Dimensions (mm)	Birim Alan (dm ²) Unit Area (dm ²)	Adet / (m ²) Unit / (m ²)
K1250	240 x 120	2,88	34,7
K1251	240 x 60	1,44	69,4



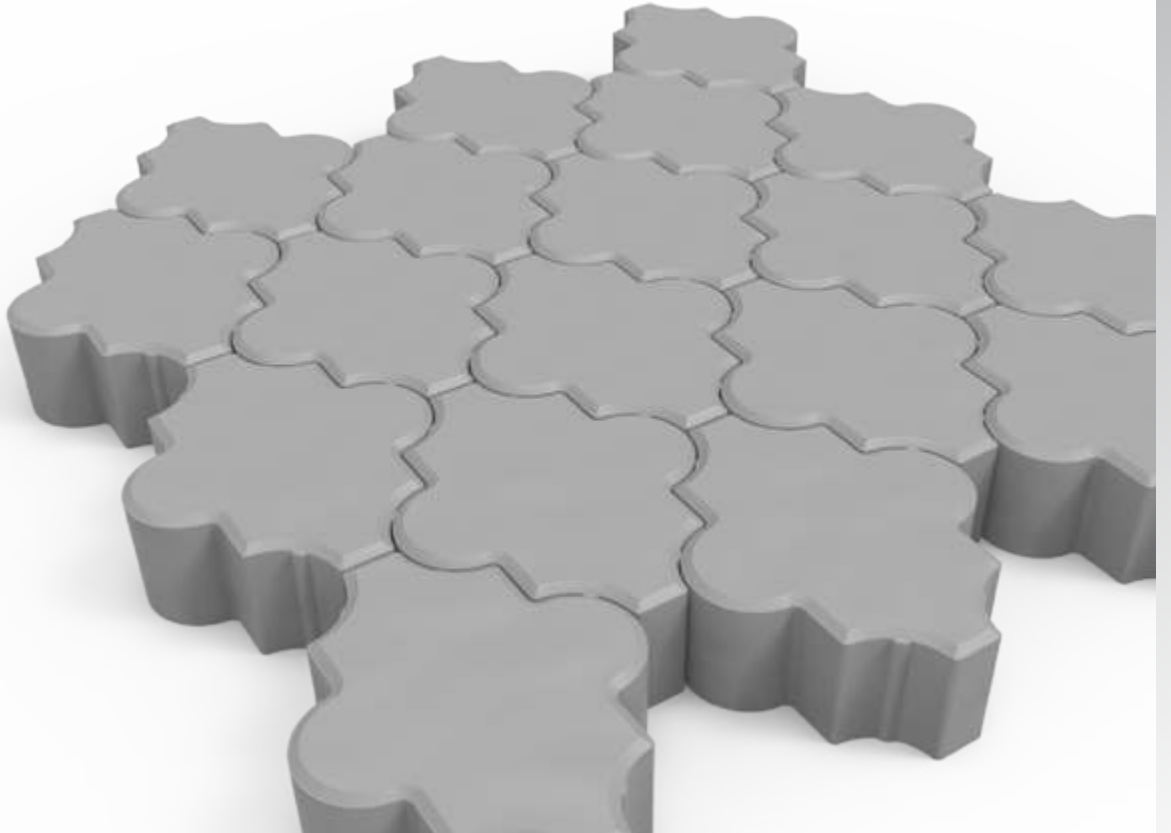
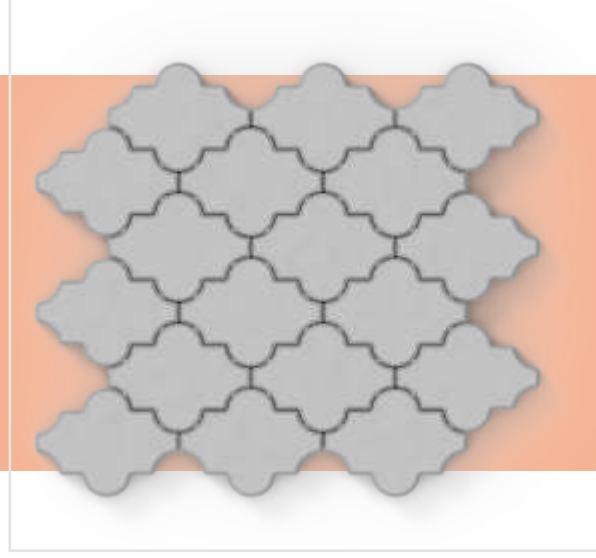
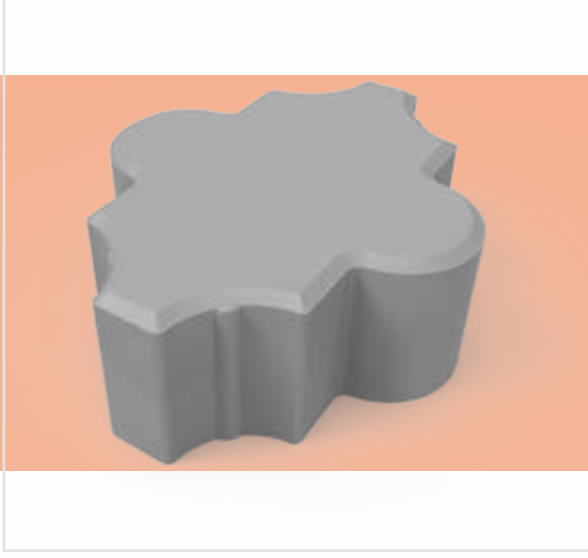
PARKE TAŐI / PAVING STONE

Ürün Kodu Product Code	Ölçüler (mm) Dimensions (mm)	Birim Alan (dm ²) Unit Area (dm ²)	Adet / (m ²) Unit / (m ²)
K1252	224 x 112	2,51	39,9



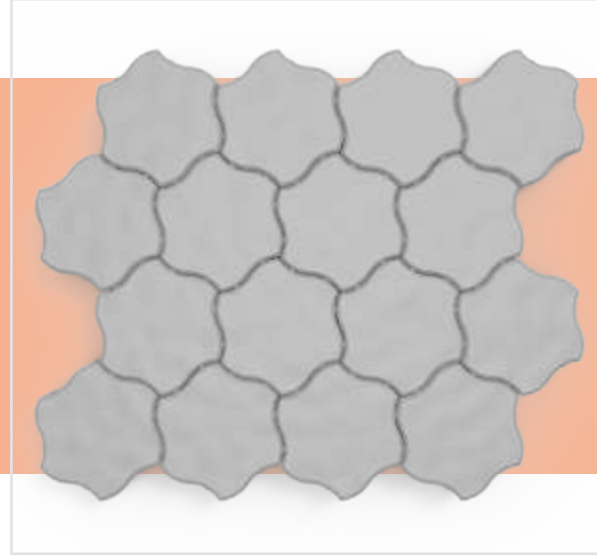
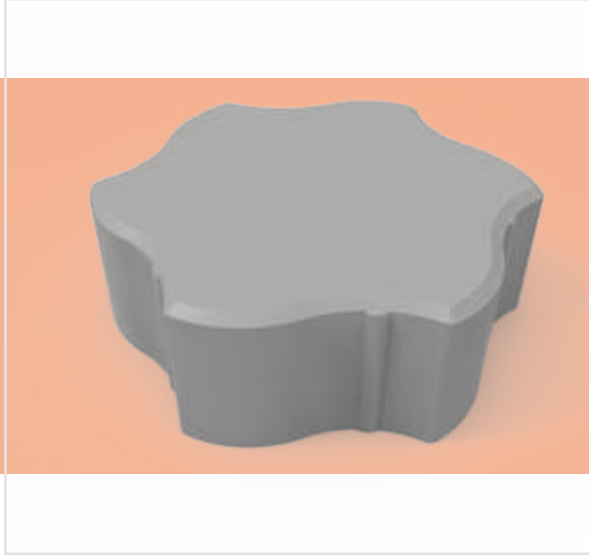
PARKE TAŐI / PAVING STONE

Ürün Kodu Product Code	Ölçüler (mm) Dimensions (mm)	Birim Alan (dm ²) Unit Area (dm ²)	Adet / (m ²) Unit / (m ²)
K1253	233 x 192	4,47	22,3



PARKE TAŐI / PAVING STONE

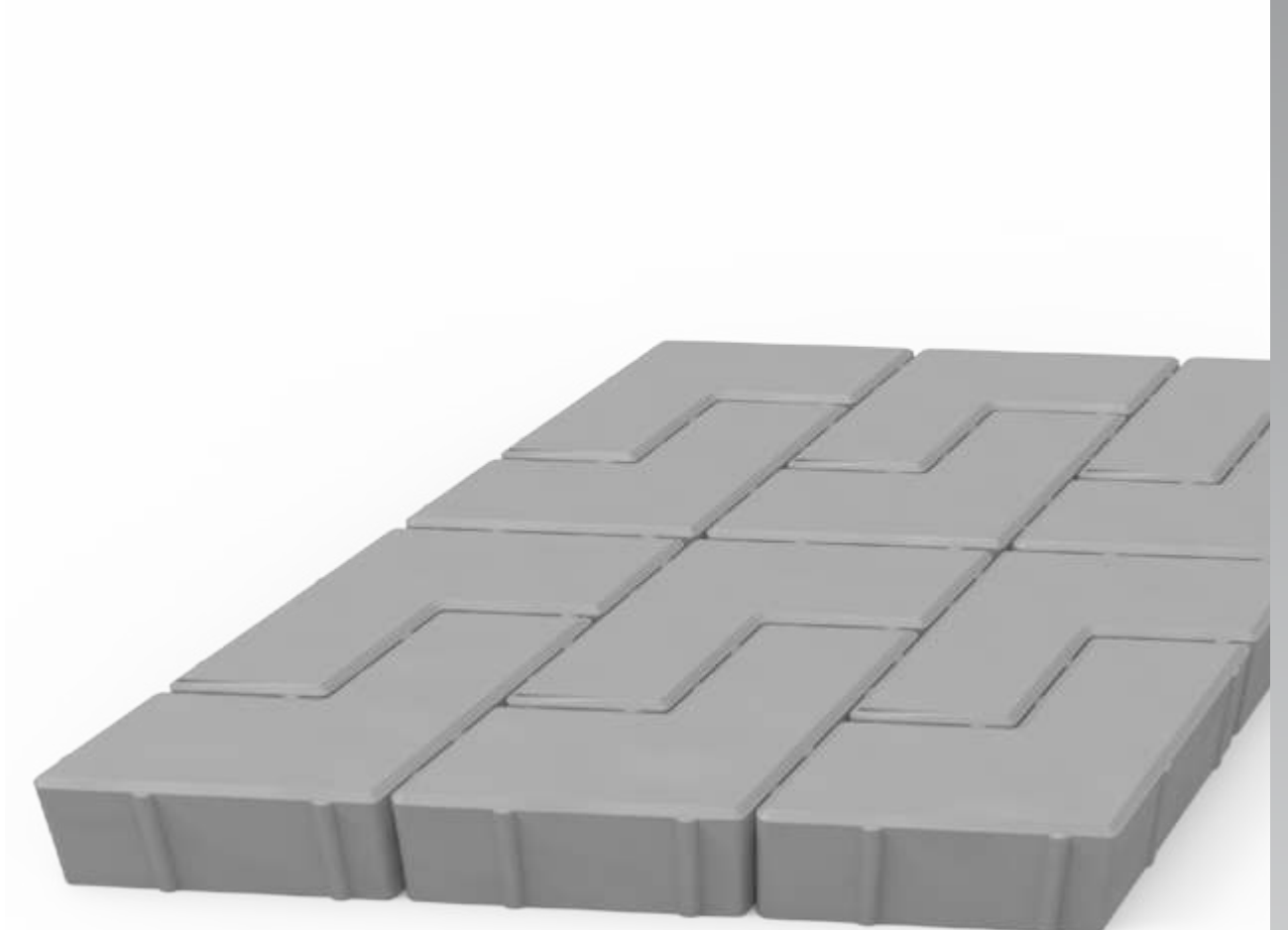
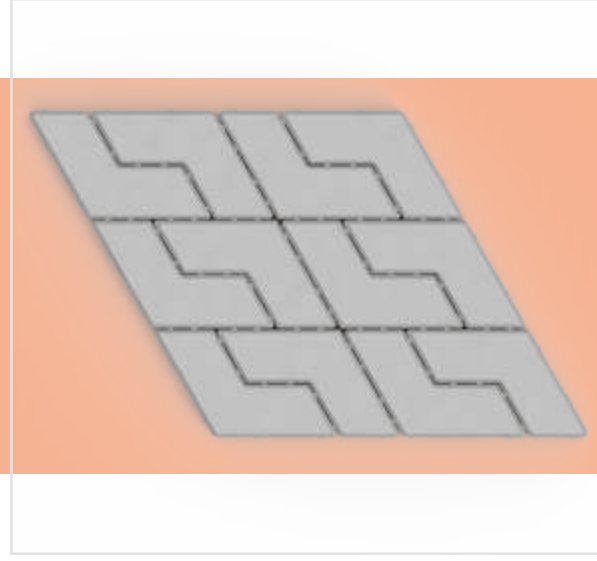
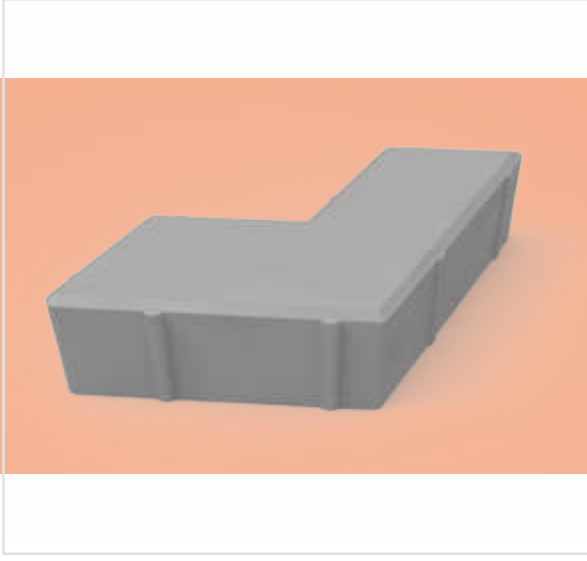
Ürün Kodu Product Code	Ölçüler (mm) Dimensions (mm)	Birim Alan (dm ²) Unit Area (dm ²)	Adet / (m ²) Unit / (m ²)
K1254	207,8 x 180	3,74	26,7





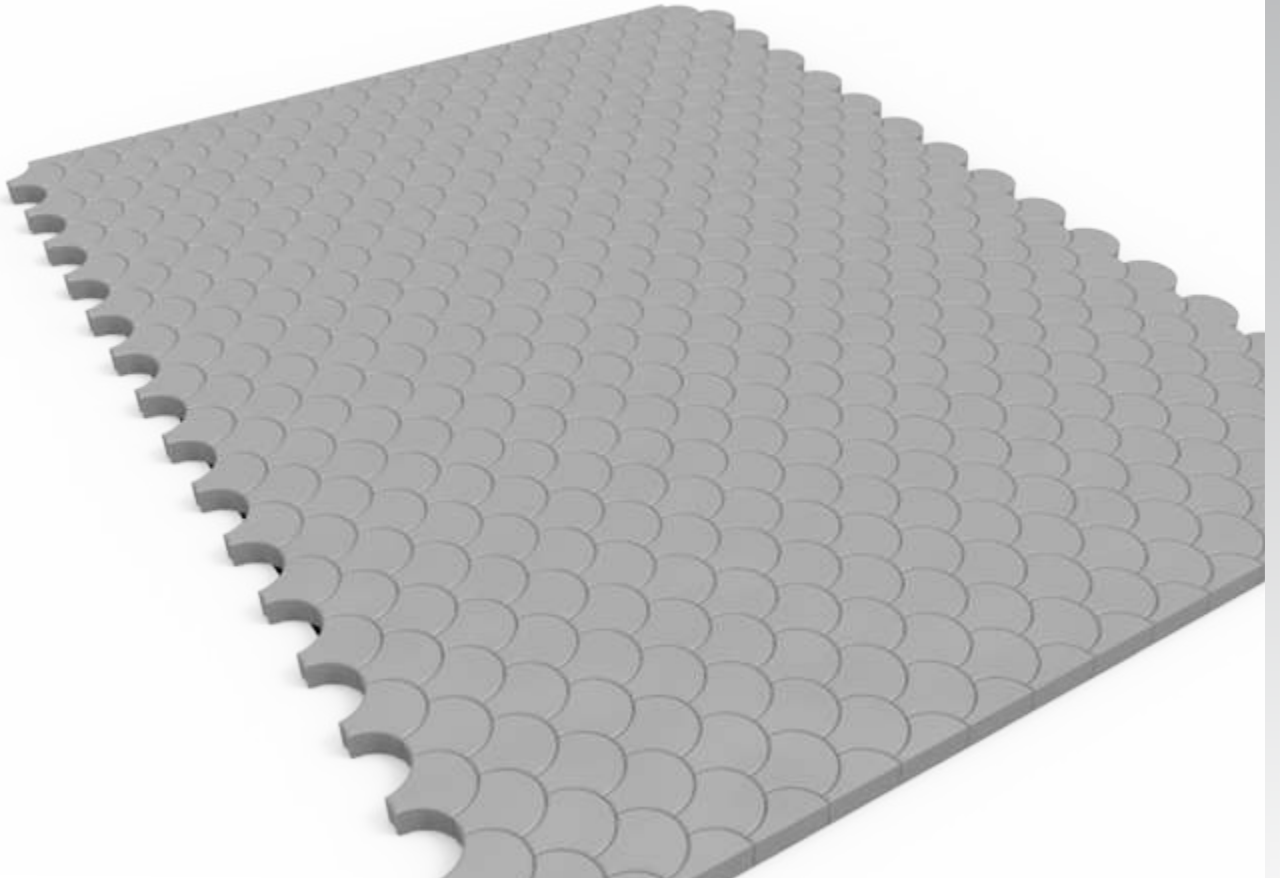
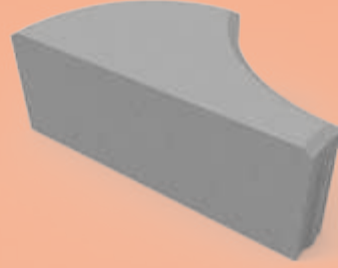
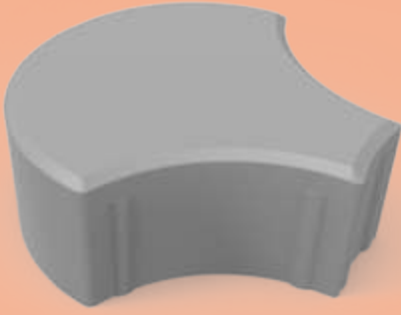
PARKE TAŐI / PAVING STONE

Ürün Kodu Product Code	Ölçüler (mm) Dimensions (mm)	Birim Alan (dm ²) Unit Area (dm ²)	Adet / (m ²) Unit / (m ²)
K1260	200/100 x 200/100	2,60	38,5



PARKE TAŐI / PAVING STONE

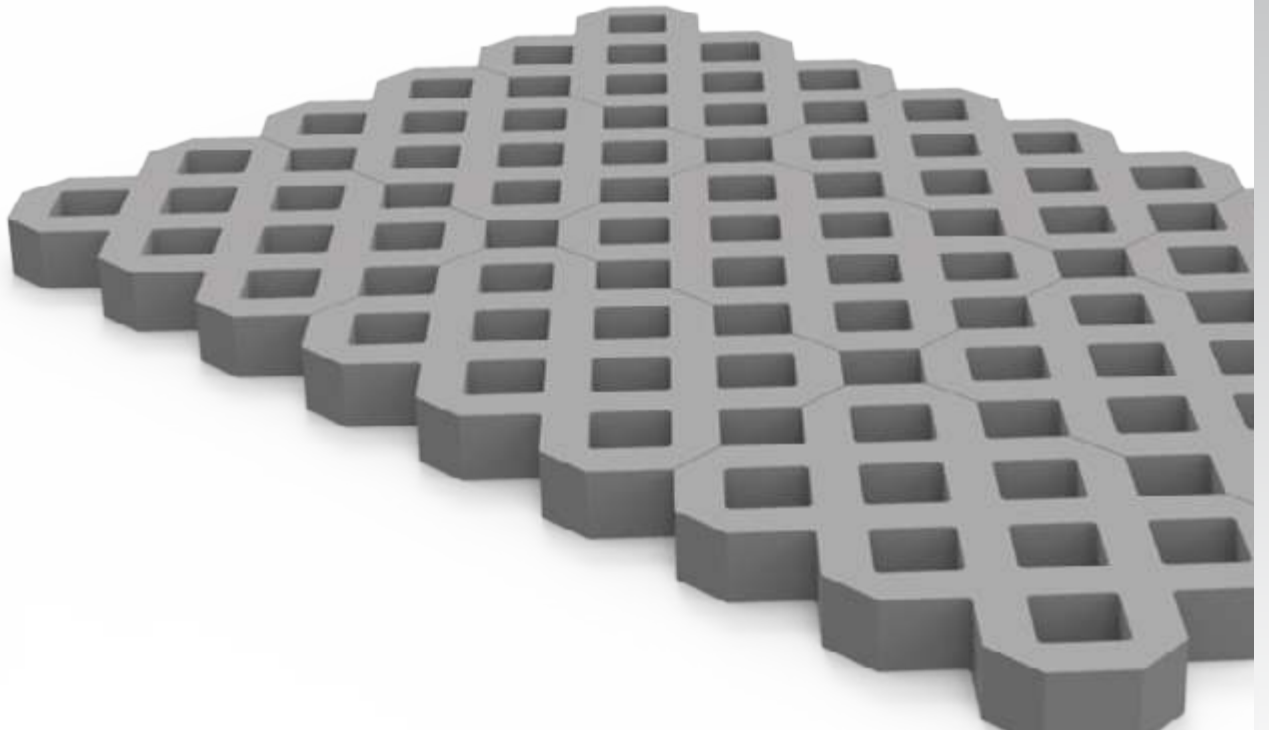
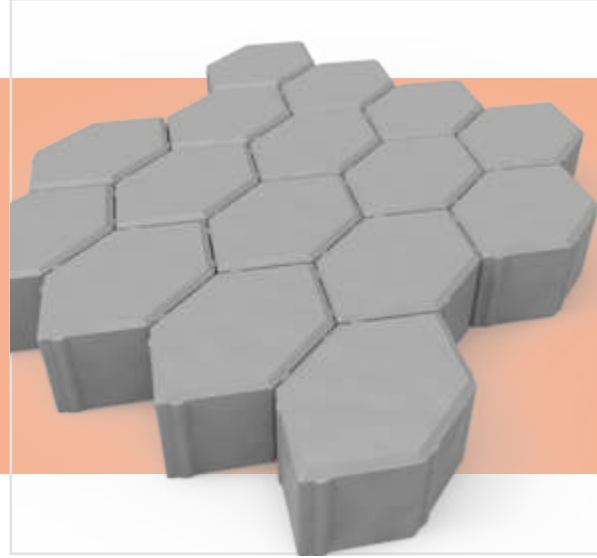
Ürün Kodu Product Code	Ölçüler (mm) Dimensions (mm)	Birim Alan (dm ²) Unit Area (dm ²)	Adet / (m ²) Unit / (m ²)
K1300	210 x 136	2,86	35
K1301	210 x 68	1,42	70





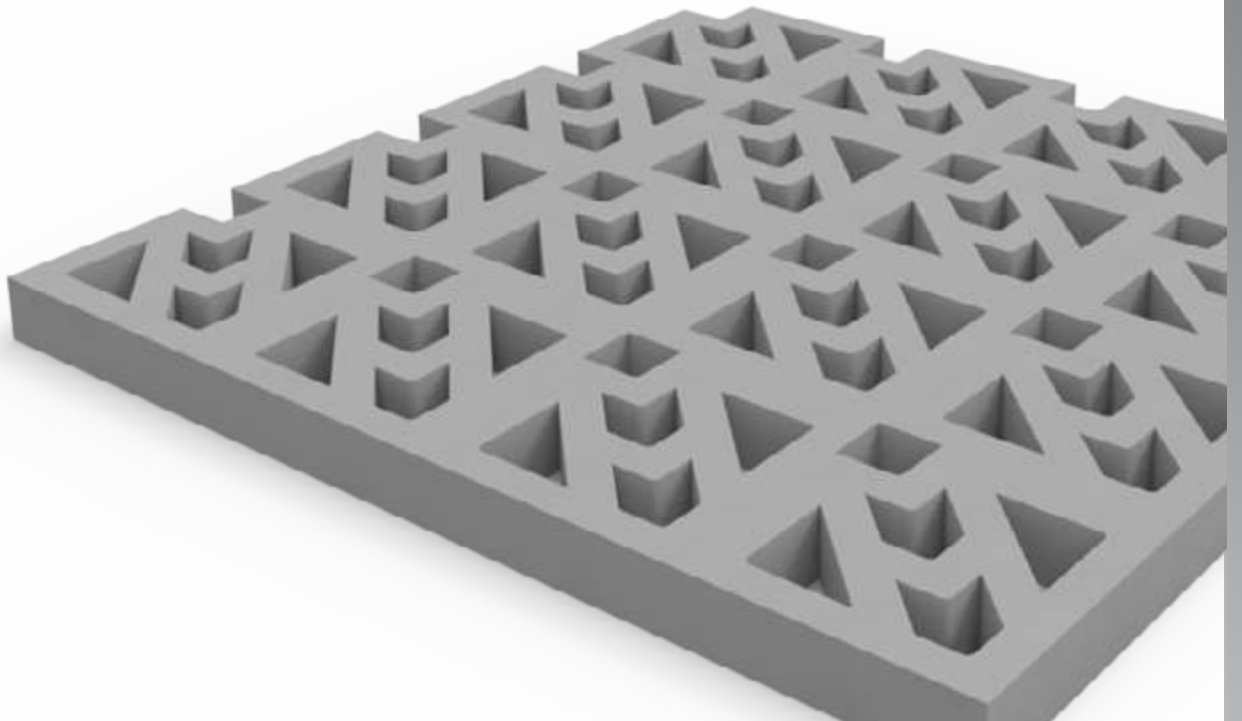
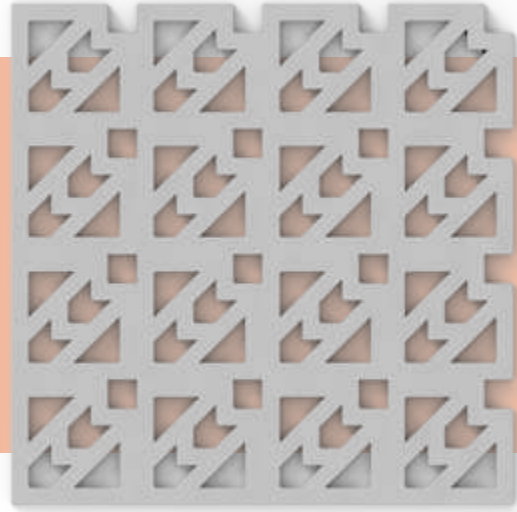
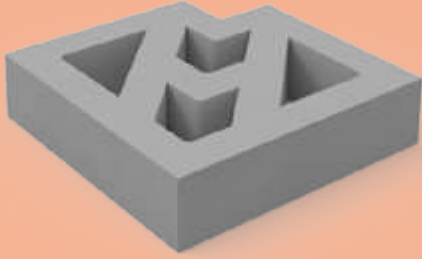
PARKE TAŐI / PAVING STONE

Ürün Kodu Product Code	Ölçüler (mm) Dimensions (mm)	Birim Alan (dm ²) Unit Area (dm ²)	Adet / (m ²) Unit / (m ²)
K1500	400 x 400	9,00	11,1
K1510	400 x 600	9,00	11,1

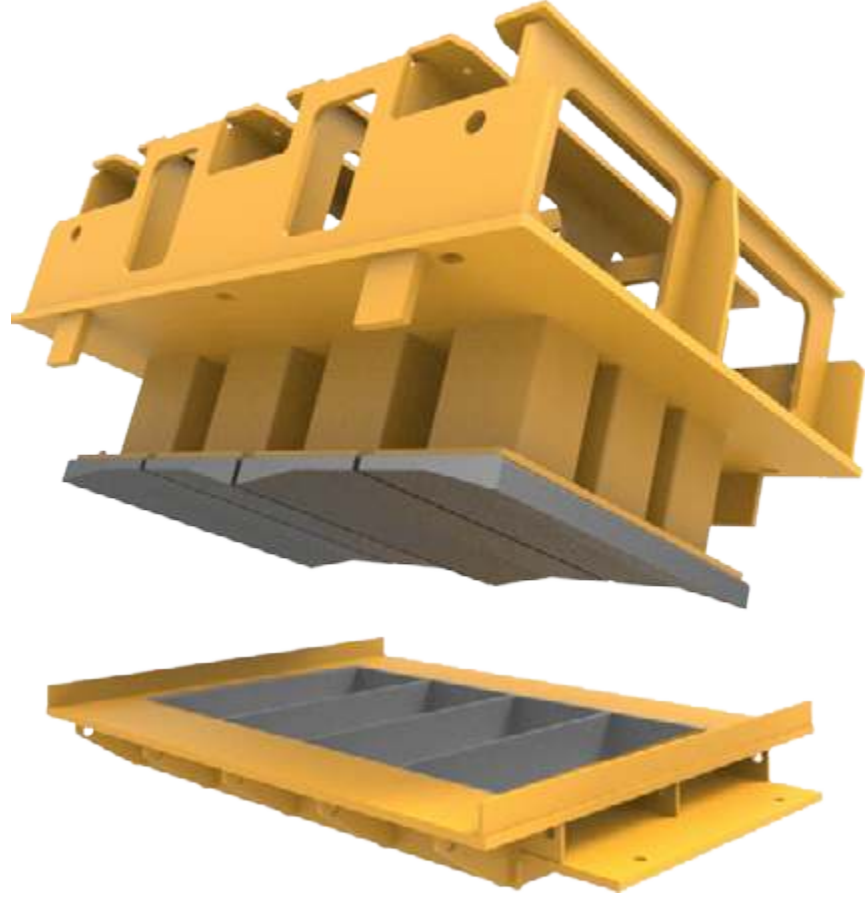


PARKE TAŐI / PAVING STONE

Ürün Kodu Product Code	Ölçüler (mm) Dimensions (mm)	Birim Alan (dm ²) Unit Area (dm ²)	Adet / (m ²) Unit / (m ²)
K1520			



BORDÜR / CURBSTONE

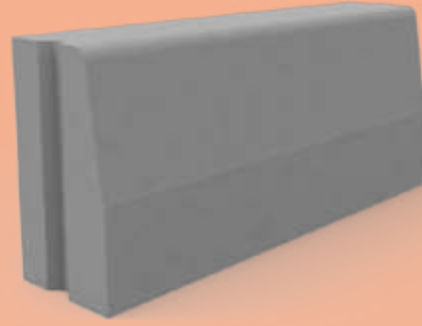
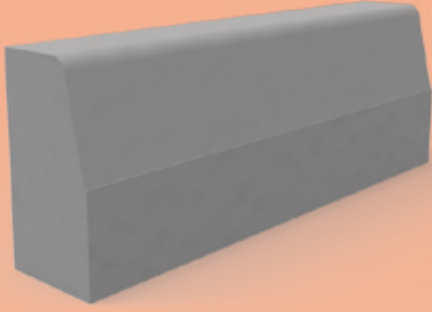


Yaya kaldırımları, yürüyüş yolları ve refüjleri yollardan ayırmak için kullanılan bordür taşları yaya- lar ve araçlar arasında güvenli bölge oluşturmak- tır. NAMTAŞ beton bordür kalıpları bu amaç doğrultusunda müşterilerinin ihtiyaçlarına yönelik ölçülendirilip, tasarlanmaktadır.

Curbstones are used to separate the sidewalks and walking paths from the roads and create a safe path between pedestrians and vehicles. Curbstone moulds are produced by NAMTAS are dimensioned and designed according the customers requests.

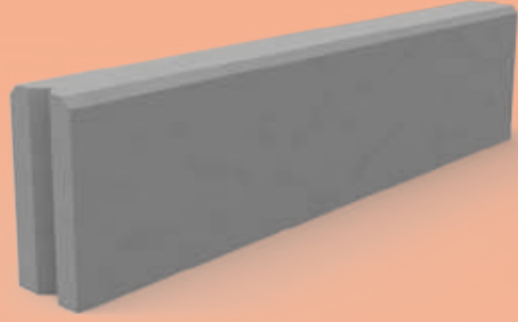
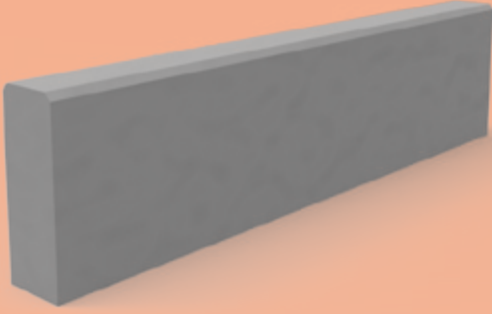


BORDÜR / CURBSTONE



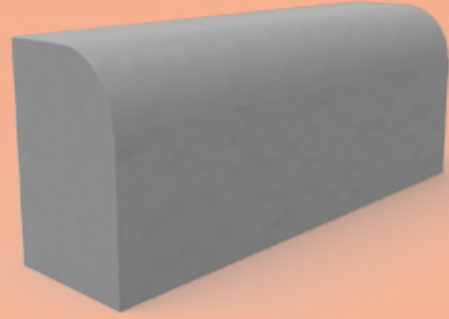
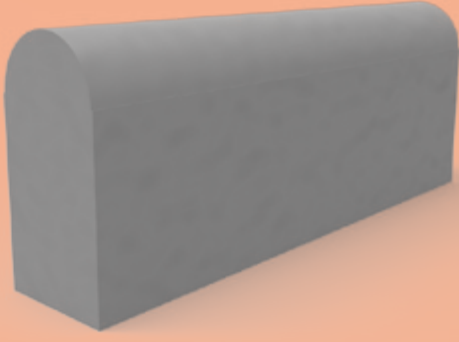
Ürün Kodu Product Code	Ölçüler (mm) Dimensions (mm)	Ağırlık (kg / m) Weight (kg / m)
K4010	50/100 x 150 x 500 (750-1000)	26
K4020	70/100 x 200 x 500 (750-1000)	39
K4030	100/130 x 250 x 500 (750-1000)	66
K4040	120/150 x 300 x 500 (750-1000)	93
K4050	150/180 x 300 x 500 (750-1000)	114
K4060	150/300 x 300 x 500 (750-1000)	155

BORDÜR / CURBSTONE



Ürün Kodu Product Code	Ölçüler (mm) Dimensions (mm)	Ağırlık (kg / m) Weight (kg / m)
K4510	75 x 150 x 500 (750-1000)	26
K4520	100 x 200 x 500 (750-1000)	46
K4530	125 x 250 x 500 (750-1000)	72
K4540	150 x 300 x 500 (750-1000)	104

BORDÜR / CURBSTONE



Ürün Kodu Product Code	Ölçüler (mm) Dimensions (mm)	Ağırlık (kg / m) Weight (kg / m)
K4710	75 x 150 x 500 (750-1000)	25
K4720	100 x 200 x 500 (750-1000)	44
K4730	125 x 250 x 500 (750-1000)	68
K4740	150 x 300 x 500 (750-1000)	98

BETON - BİMS BLOK / HOLLOW BLOCKS



İnşaat sektöründe yaygın olarak kullanılan briket ve bims blokların ölçülendirilmesi ülkelere, bölgelere ve kullanım alanlarına göre farklılık göstermektedir.

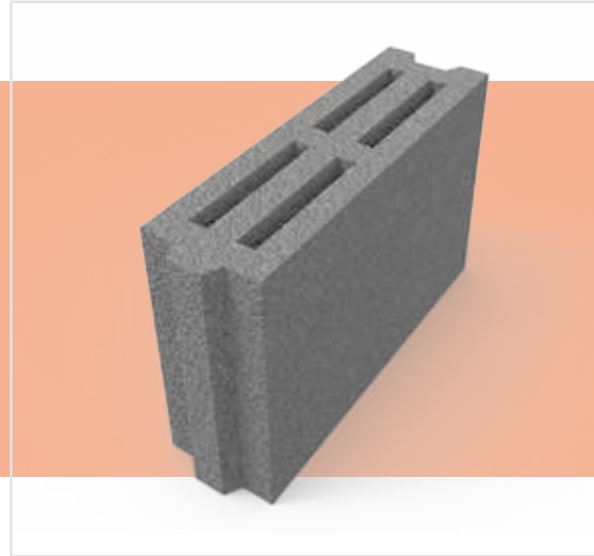
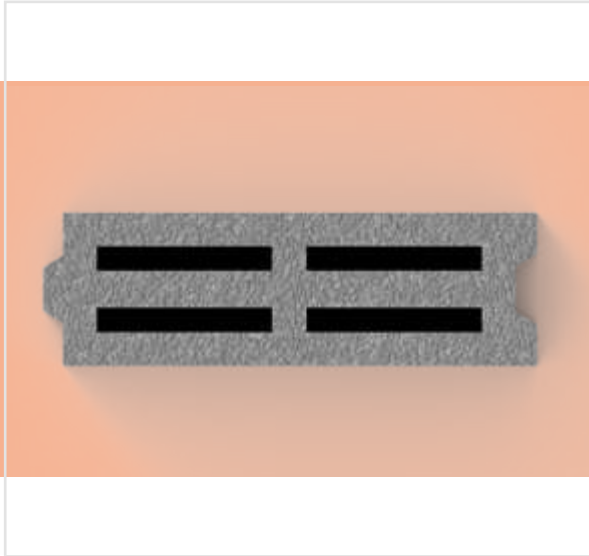
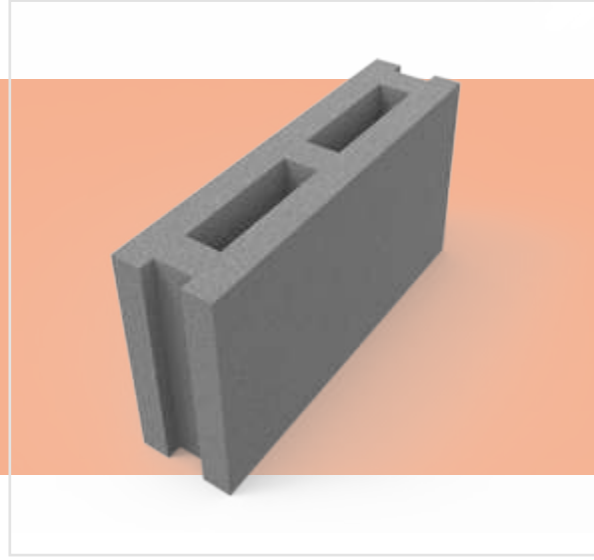
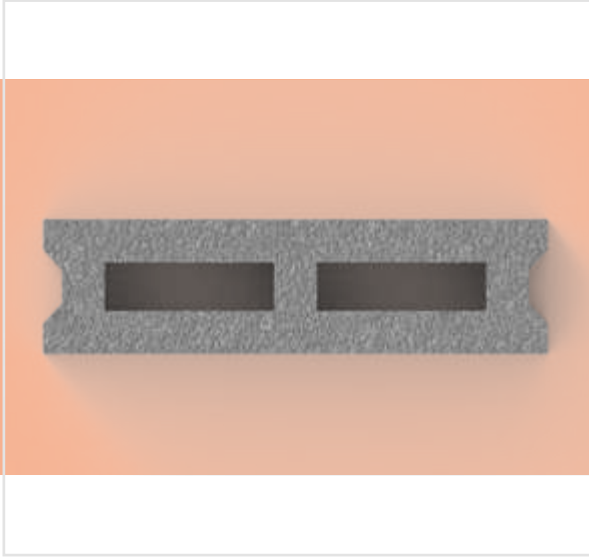
NAMTAŞ yüksek kalite ve geniş çeşitlilikte ürün yelpazesıyla müşterilerine uygun çözümlerle, talep edilen briket bloklarının kalıplarını sunar.

The dimensions and design ,of the Concrete and Pumice Hollow Blocks which are mostly used in the construction sector, varies according the country, region and area of usage. Namtas presents the requested Hollow Block moulds to customers with high quality, wide production range and customer based solutions .



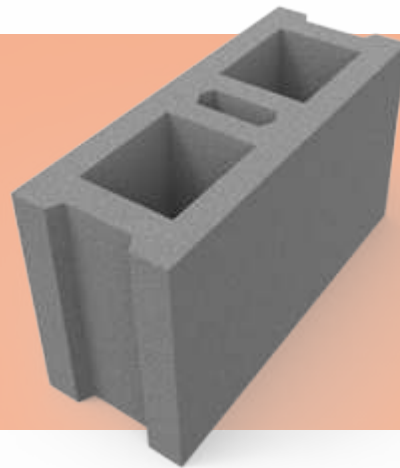
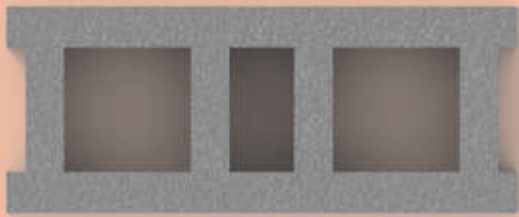
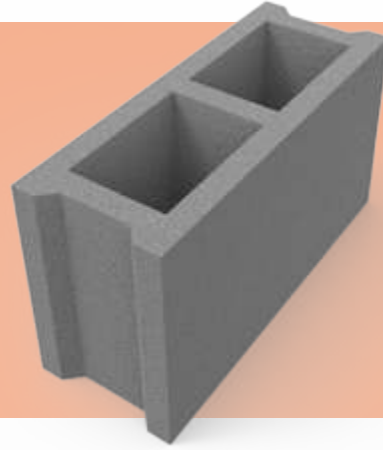
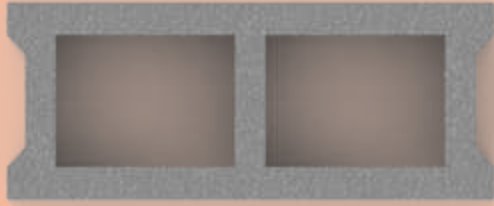
BETON-BİMS BLOK / HOLLOW BLOCKS

Ürün Kodu Product Code	Ölçüler (mm) Dimensions (mm)	Açıklamalar Comments
K6010	100 x 400 x 200	bottom closed or open / interlaced or mortared
K6012	100 x 400 x 200	bottom closed or open / interlaced or mortared



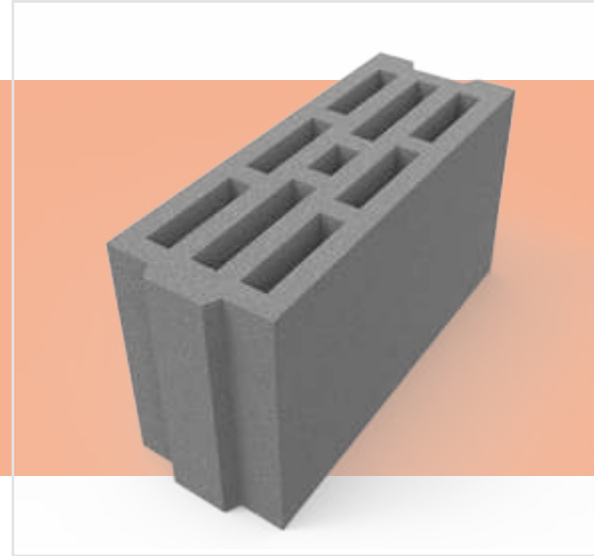
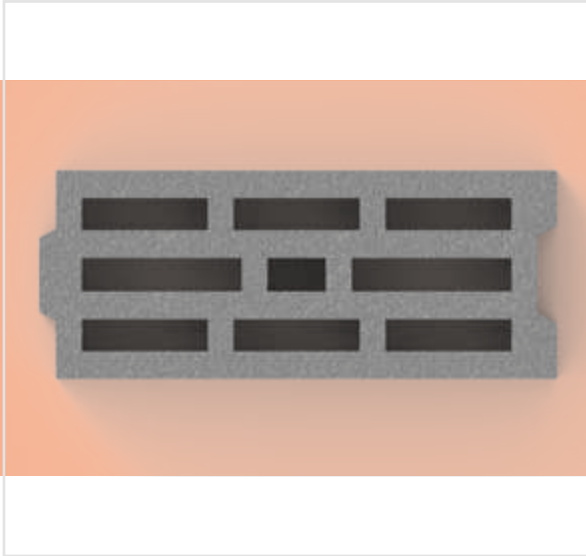
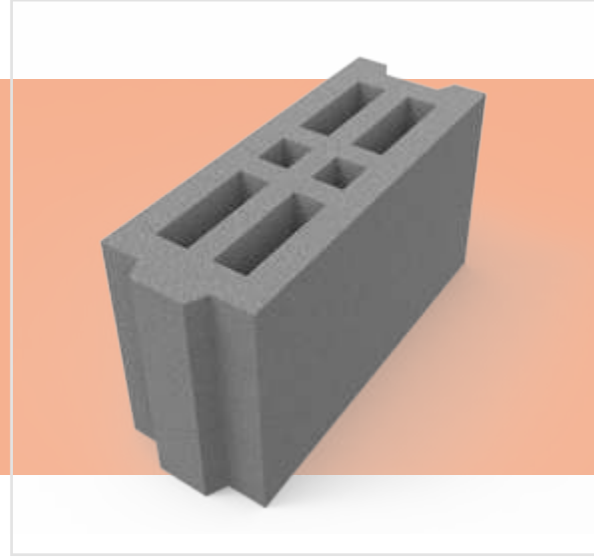
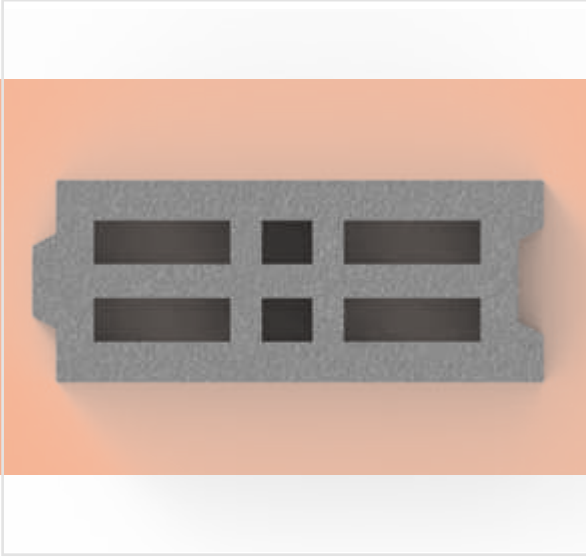
BETON-BİMS BLOK / HOLLOW BLOCKS

Ürün Kodu Product Code	Ölçüler (mm) Dimensions (mm)	Açıklamalar Comments
K6020	150 x 400 x 200	bottom closed or open / interlaced or mortared
K6021	150 x 400 x 200	bottom closed or open / interlaced or mortared



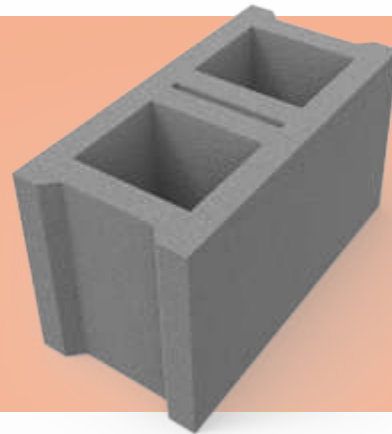
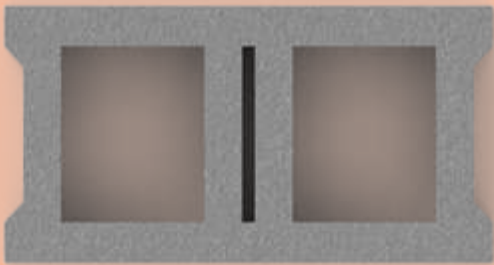
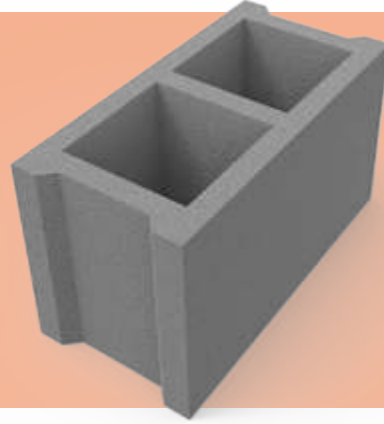
BETON-BİMS BLOK / HOLLOW BLOCKS

Ürün Kodu Product Code	Ölçüler (mm) Dimensions (mm)	Açıklamalar Comments
K6023	150 x 400 x 200	bottom closed or open / interlaced or mortared
K6024	150 x 400 x 200	bottom closed or open / interlaced or mortared



BETON-BİMS BLOK / HOLLOW BLOCKS

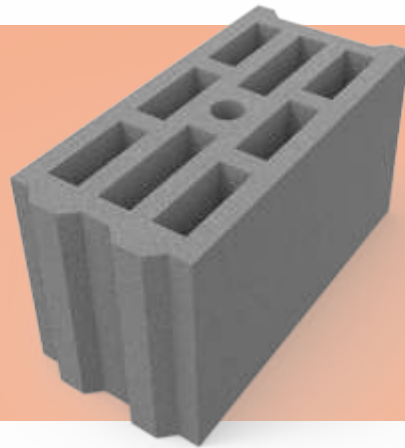
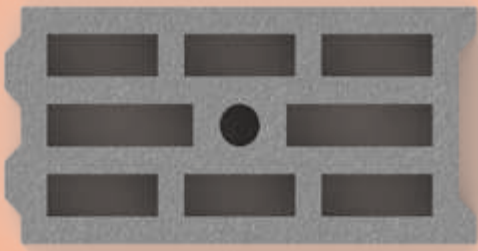
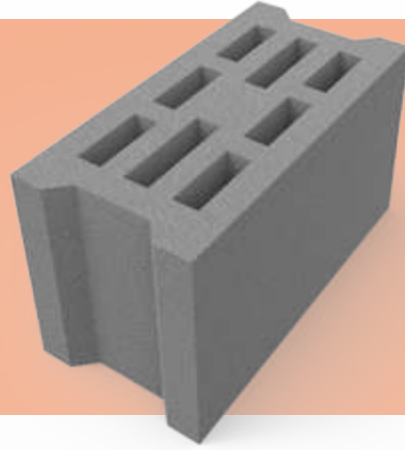
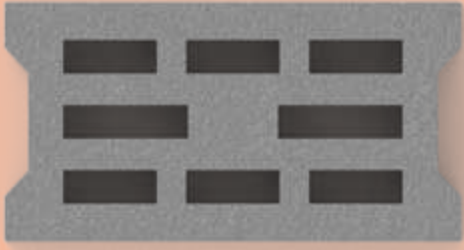
Ürün Kodu Product Code	Ölçüler (mm) Dimensions (mm)	Açıklamalar Comments
K6030	200 x 400 x 200	bottom closed or open / interlaced or mortared
K6031	200 x 400 x 200	bottom closed or open / interlaced or mortared





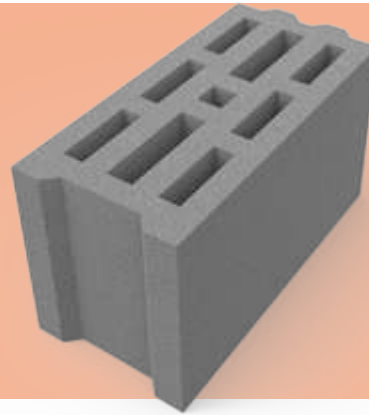
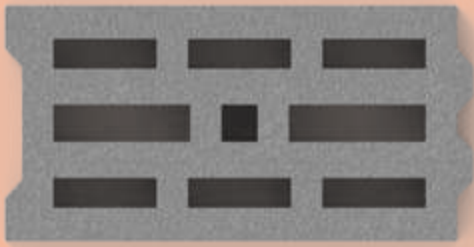
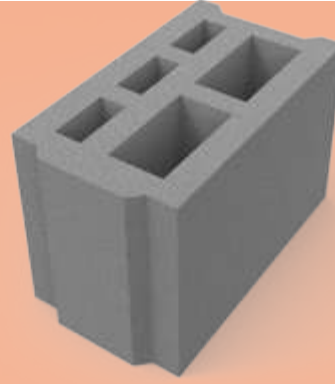
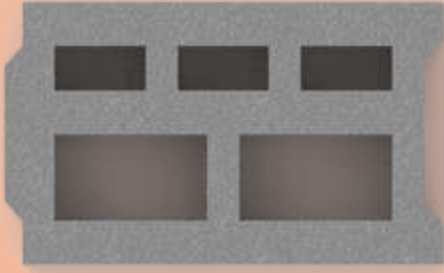
BETON-BİMS BLOK / HOLLOW BLOCKS

Ürün Kodu Product Code	Ölçüler (mm) Dimensions (mm)	Açıklamalar Comments
K6032	200 x 400 x 200	bottom closed or open / interlaced or mortared
K6033	200 x 400 x 200	bottom closed or open / interlaced or mortared



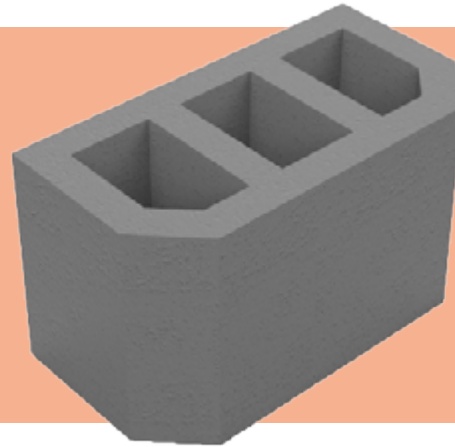
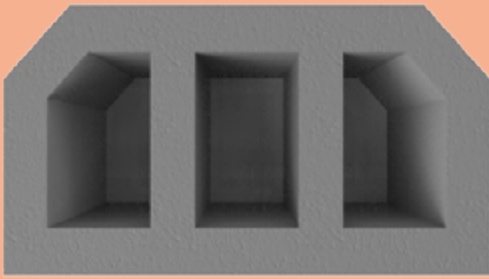
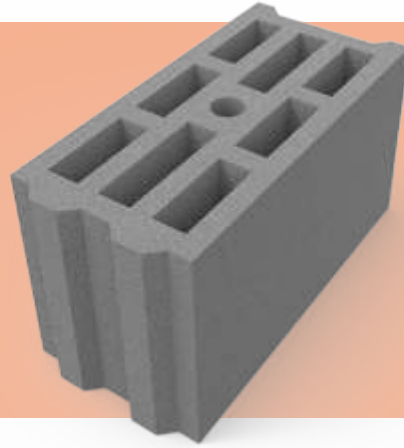
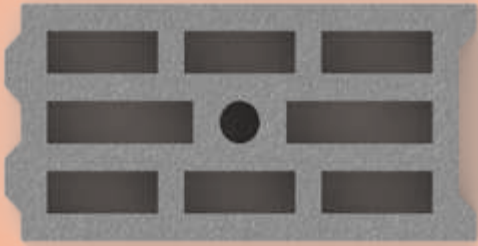
BETON-BİMS BLOK / HOLLOW BLOCKS

Ürün Kodu Product Code	Ölçüler (mm) Dimensions (mm)	Açıklamalar Comments
K6034	200 x 400 x 200	bottom closed or open / interlaced or mortared
K6035	250 x 400 x 200	bottom closed or open / interlaced or mortared



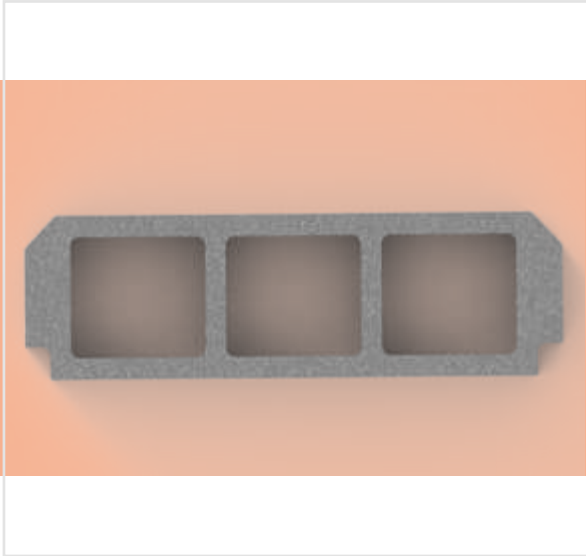
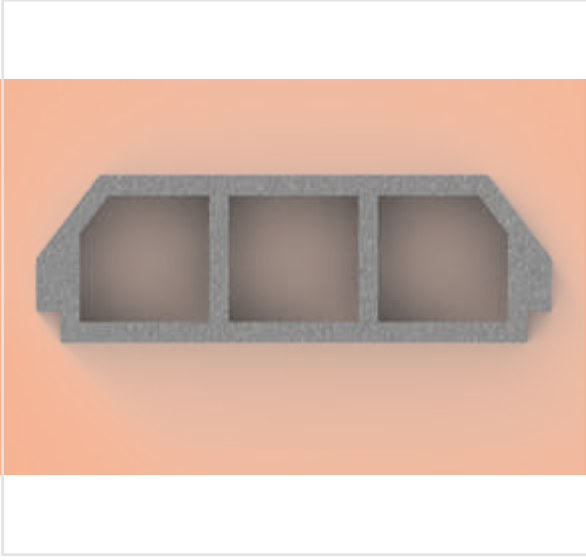
BETON-BİMS BLOK / HOLLOW BLOCKS

Ürün Kodu Product Code	Ölçüler (mm) Dimensions (mm)	Açıklamalar Comments
K6036	300 x 400 x 200	bottom closed or open / interlaced or mortared
K6037	200 x 400 x 200	bottom closed or open / interlaced or mortared



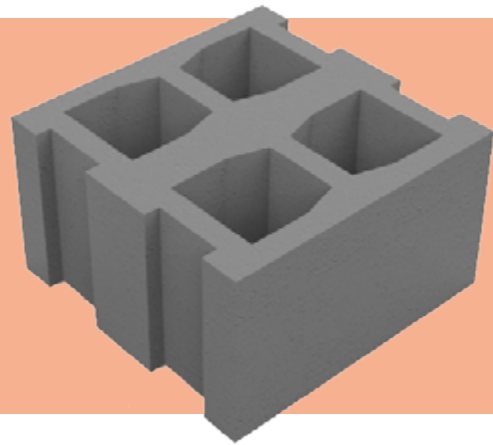
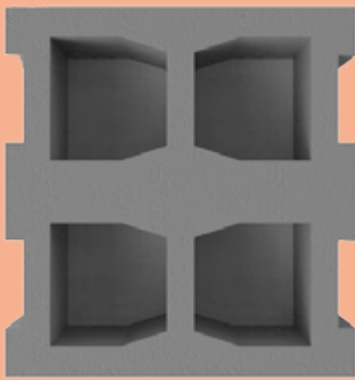
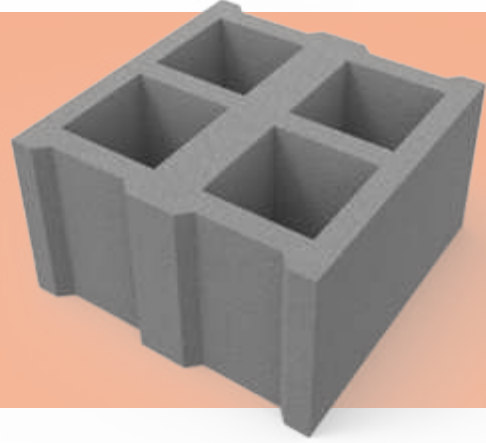
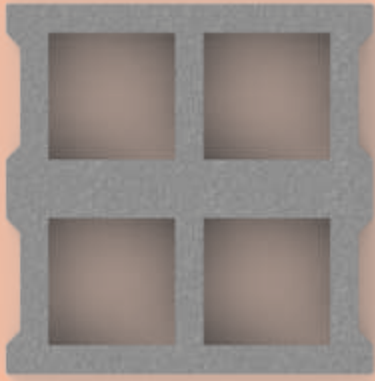
BETON-BİMS BLOK / HOLLOW BLOCKS

Ürün Kodu Product Code	Ölçüler (mm) Dimensions (mm)	Açıklamalar Comments
K6038	160 x 526 x 200	bottom closed or open / interlaced or mortared
K6039	150 x 526 x 200	bottom closed or open / interlaced or mortared



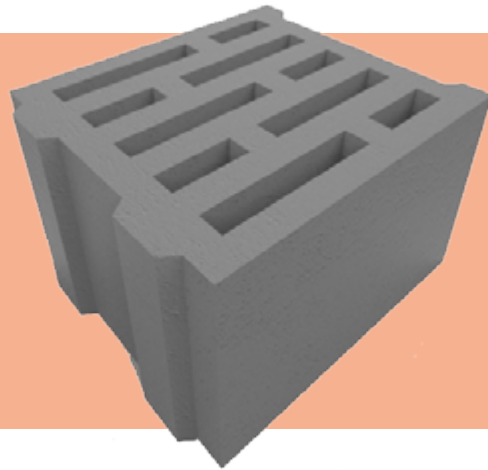
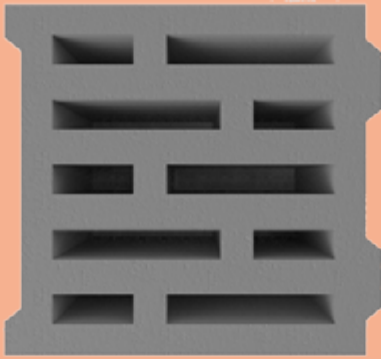
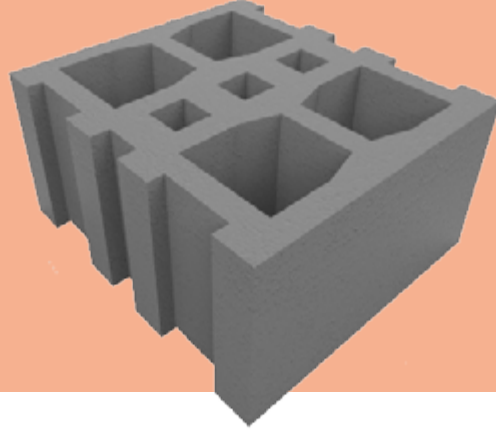
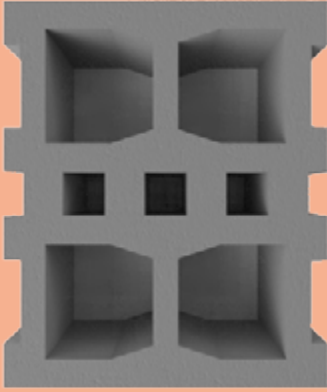
BETON-BİMS BLOK / HOLLOW BLOCKS

Ürün Kodu Product Code	Ölçüler (mm) Dimensions (mm)	Açıklamalar Comments
K6040	200 x 400 x 200	bottom closed or open / interlaced or mortared
K6041	200 x 400 x 200	bottom closed or open / interlaced or mortared



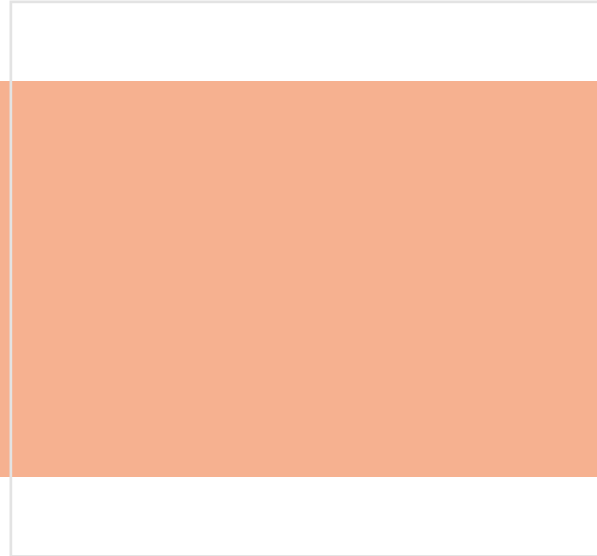
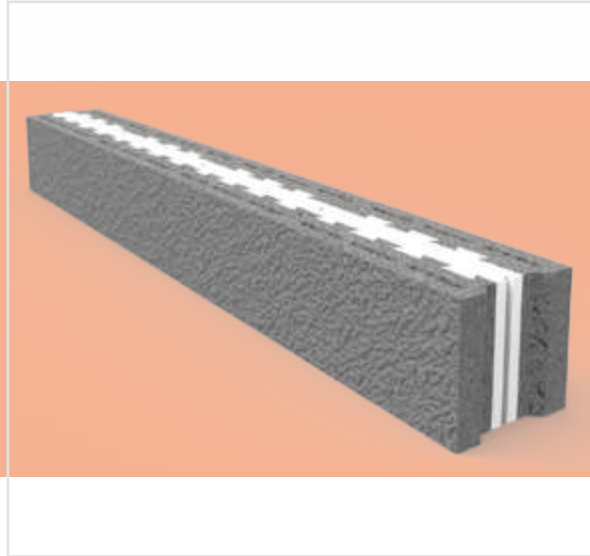
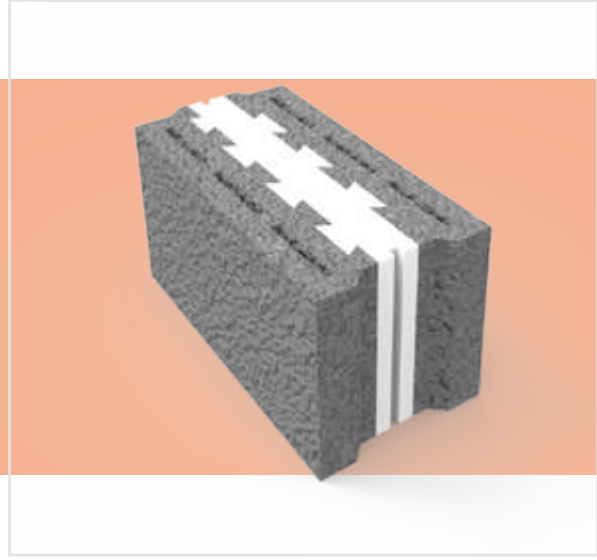
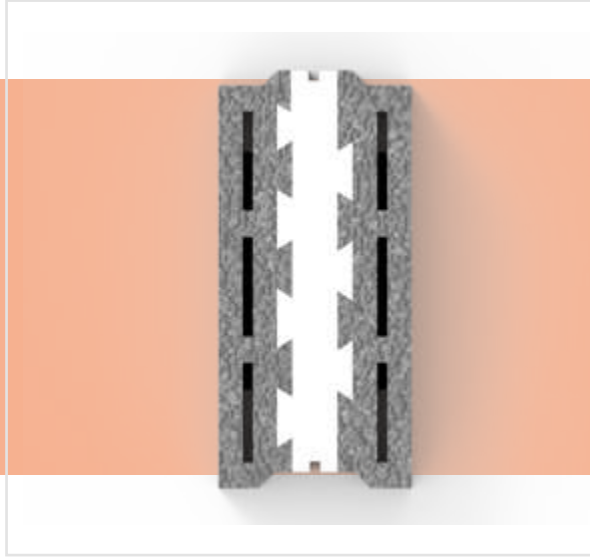
BETON-BİMS BLOK / HOLLOW BLOCKS

Ürün Kodu Product Code	Ölçüler (mm) Dimensions (mm)	Açıklamalar Comments
K6042	300 x 400 x 200	bottom closed or open / interlaced or mortared
K6043	300 x 400 x 200	bottom closed or open / interlaced or mortared



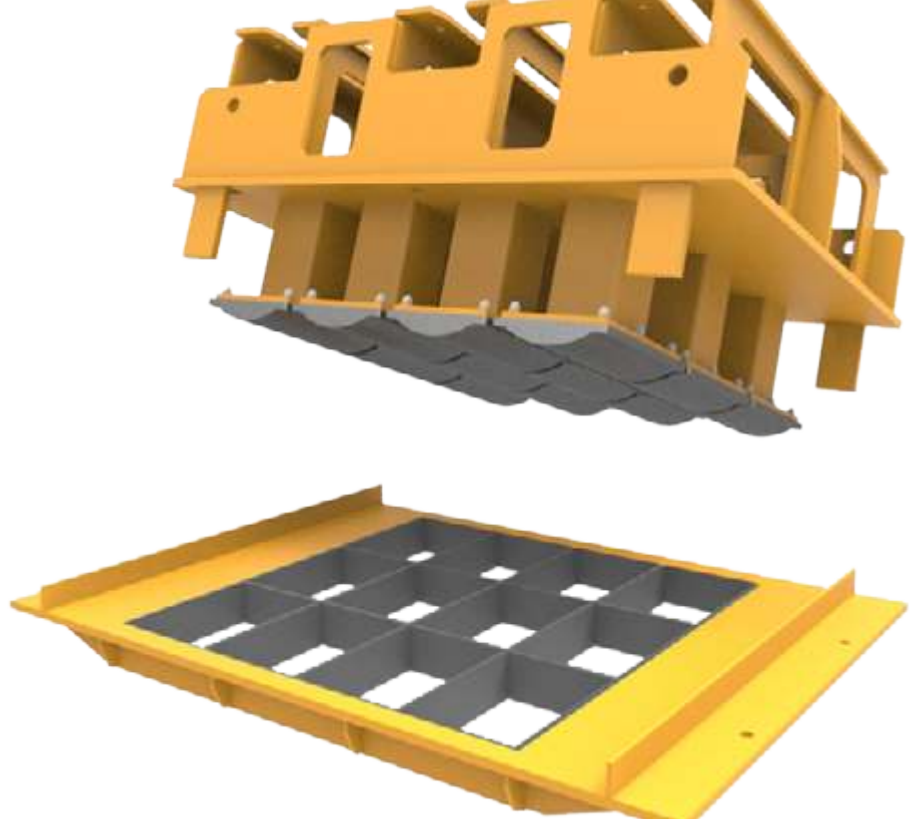
BETON-BİMS BLOK / HOLLOW BLOCKS

Ürün Kodu Product Code	Ölçüler (mm) Dimensions (mm)	Açıklamalar Comments
K6045	200 x 400 x 200	bottom closed or open / interlaced or mortared
		bottom closed or open / interlaced or mortared



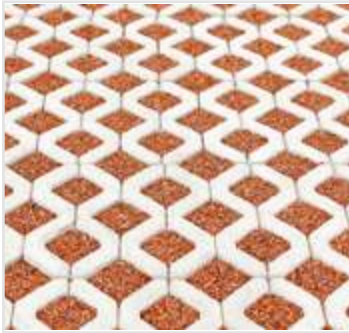


BETON OLUKLAR / CONCRETE GUTTERS



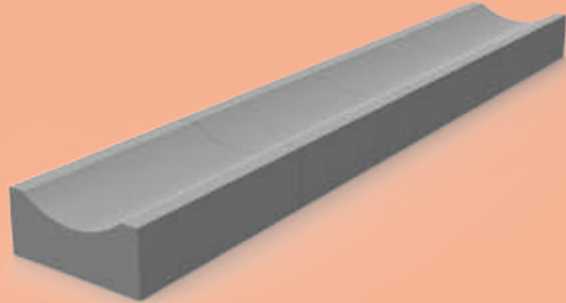
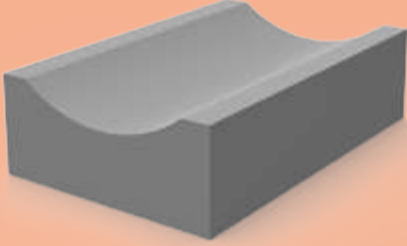
Yol yüzeyine gelen suları rögarlara iletmek amacıyla tasarlanan beton su olukları kolay uygulanabilirliği ve düşük maliyetli oluşuyla sektörde yaygın olarak kullanılmaktadır. NAMTAŞ yüksek kalite ve geniş çeşitlilikte ürün yelpazesıyla müşterilerine uygun çözümlerle, talep edilen beton su oluğu kalıplarını sunar.

Due to its low cost and easy to apply features, Concrete Gutters are used in the sector to conduct the water from the road surface to the manhole. Namtas presents the requested Concrete Gutter moulds to customers with high quality, wide production range and customer based solutions .



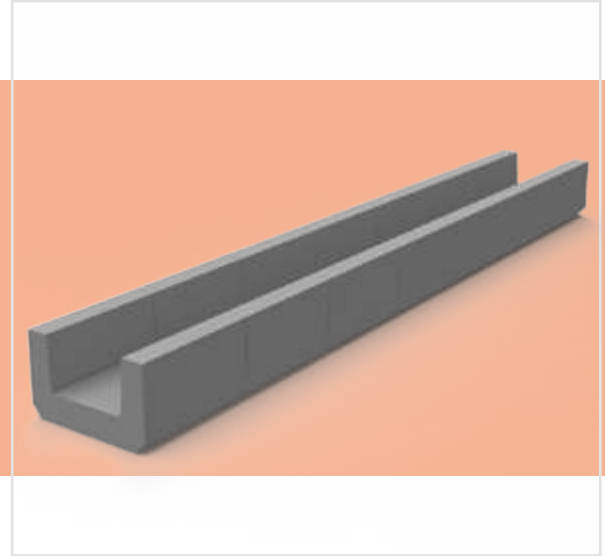
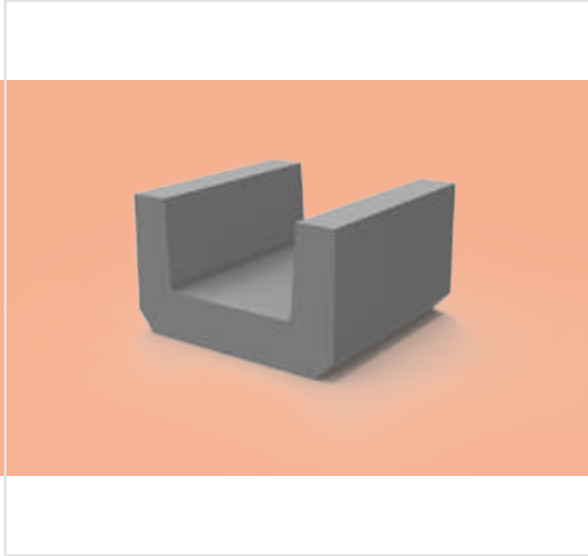
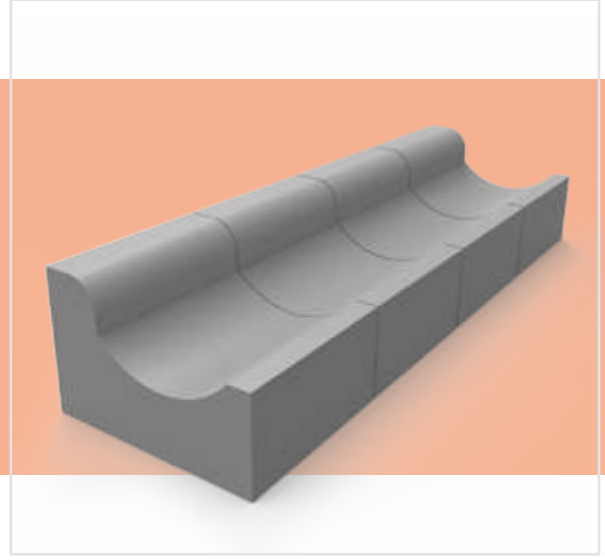
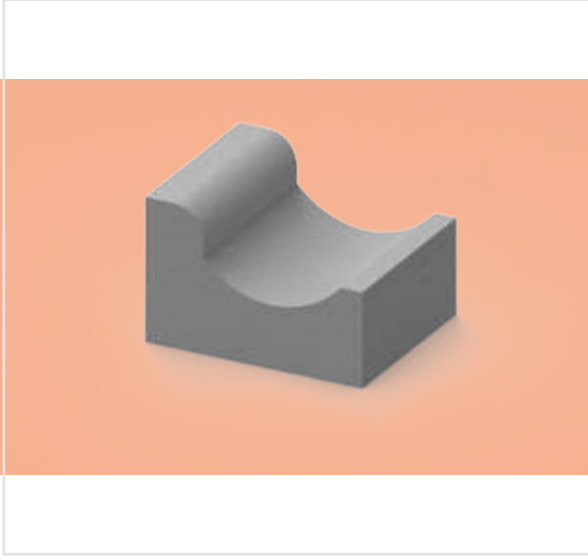
BETON OLUKLAR / CONCRETE GUTTERS

Ürün Kodu Product Code	Ölçüler (mm) Dimensions (mm)	Açıklamalar Comments
K50101	120/90 x 330 x 500	dimensions can be varied according to the customers' needs
K50102	150/120 x 330 x 500	dimensions can be varied according to the customers' needs



BETON OLUKLAR / CONCRETE GUTTERS

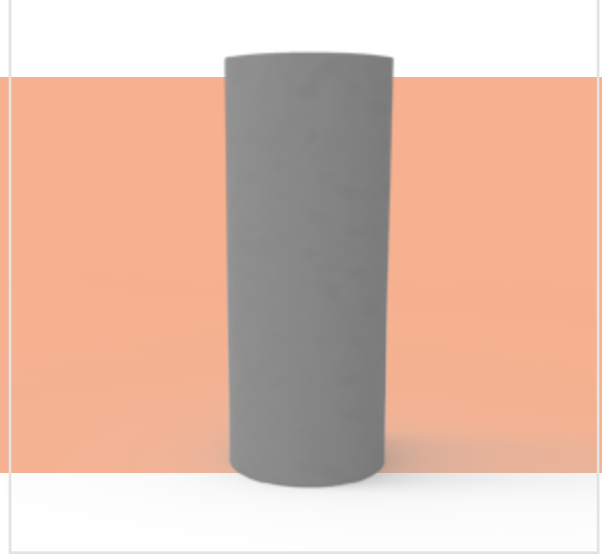
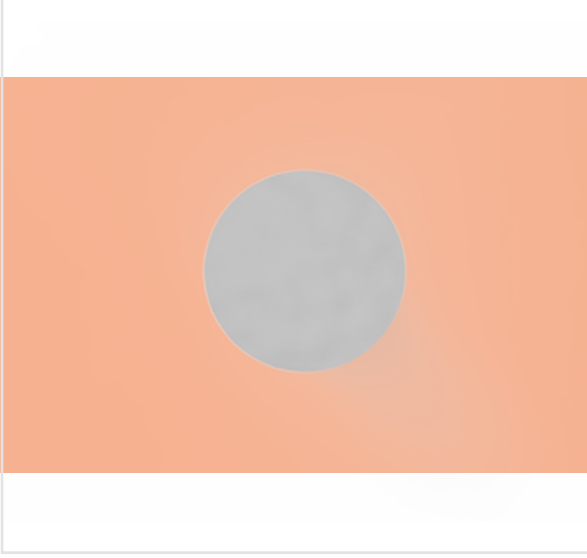
Ürün Kodu Product Code	Ölçüler (mm) Dimensions (mm)	Açıklamalar Comments
K50103	180/80 x 250 x 300	dimensions can be varied according to the customers' needs
K50104	150/30 x 250 x 300	dimensions can be varied according to the customers' needs





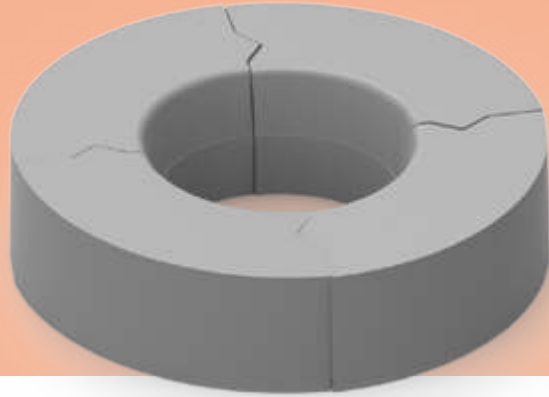
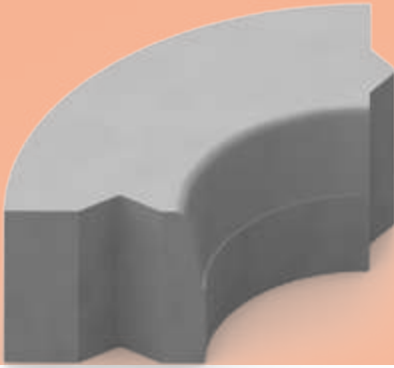
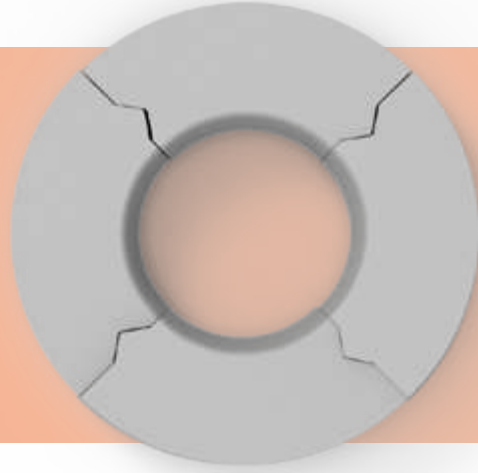
DEKORATİF ÜRÜNLER / DECORATIVE PRODUCTS

Ürün Kodu Product Code	Ölçüler (mm) Dimensions (mm)	Açıklamalar Comments
K60101	150 x 250	dimensions can be varied according to the customers' needs



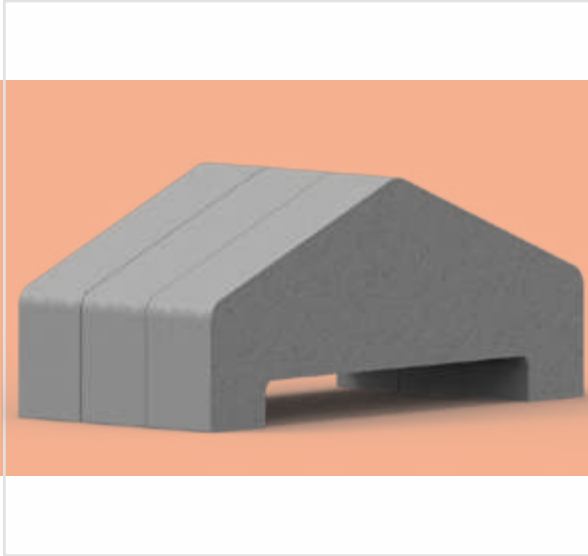
DEKORATİF ÜRÜNLER / DECORATIVE PRODUCTS

Ürün Kodu Product Code	Ölçüler (mm) Dimensions (mm)	Açıklamalar Comments
K60102	240 x 260 x 664	



DEKORATİF ÜRÜNLER / DECORATIVE PRODUCTS

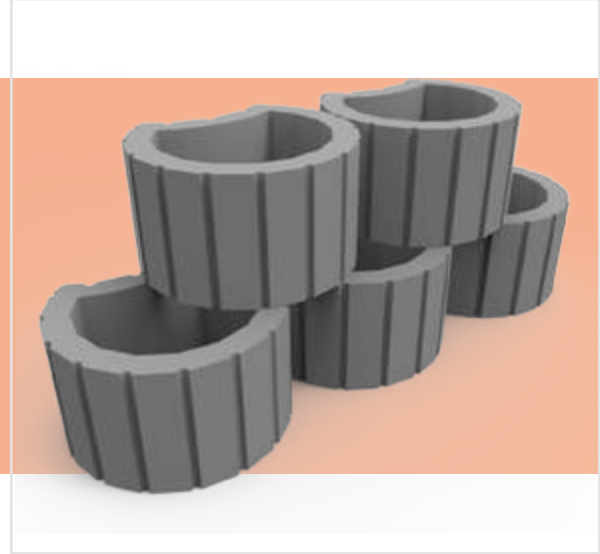
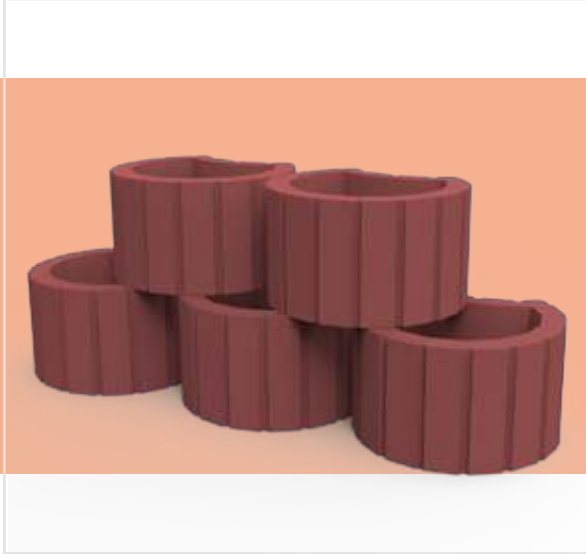
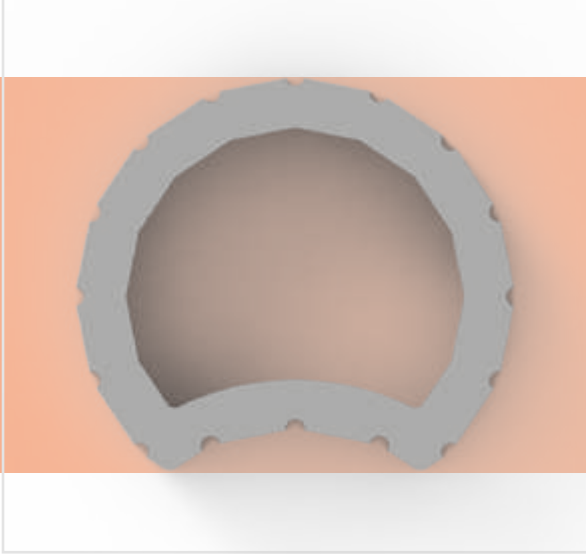
Ürün Kodu Product Code	Ölçüler (mm) Dimensions (mm)	Açıklamalar Comments
K60103	30 x 263 x 160/50	dimensions can be varied according to the customers' needs





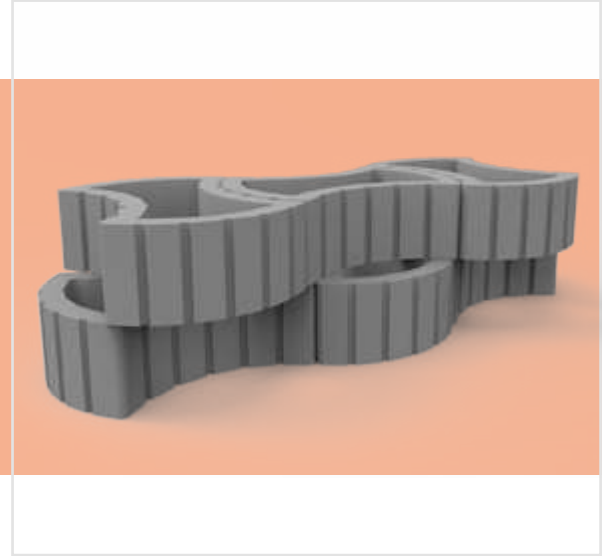
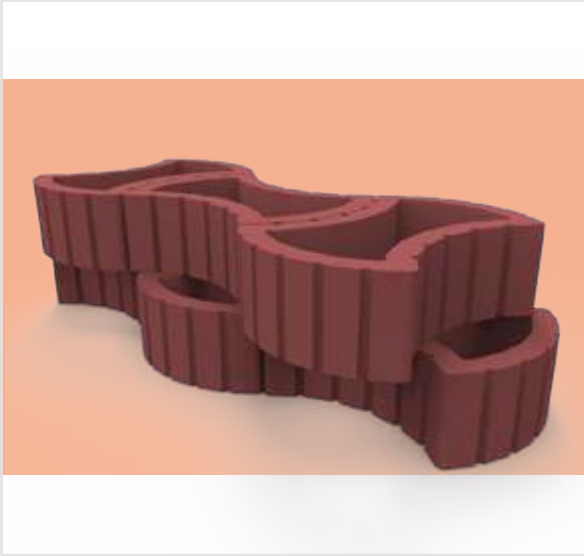
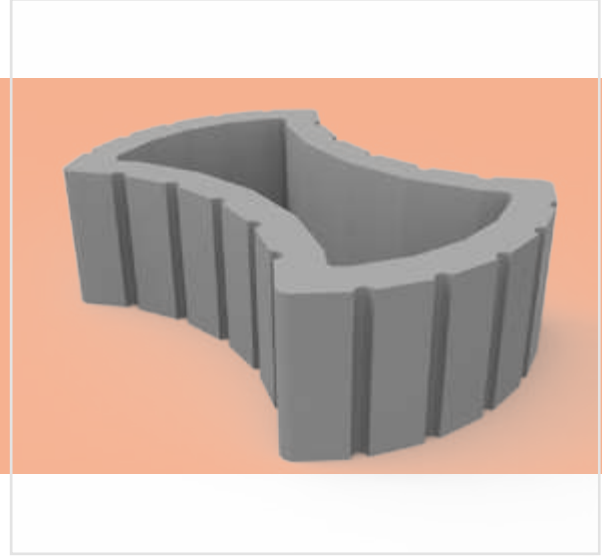
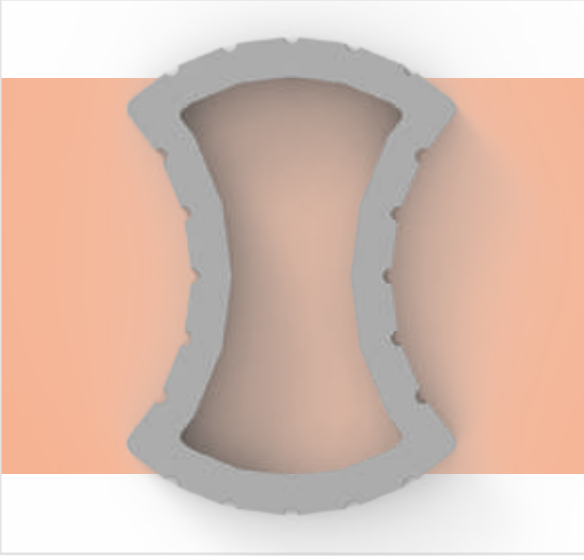
DEKORATİF ÜRÜNLER / DECORATIVE PRODUCTS

Ürün Kodu Product Code	Ölçüler (mm) Dimensions (mm)	Açıklamalar Comments
K60103	280 x 347 x 200	



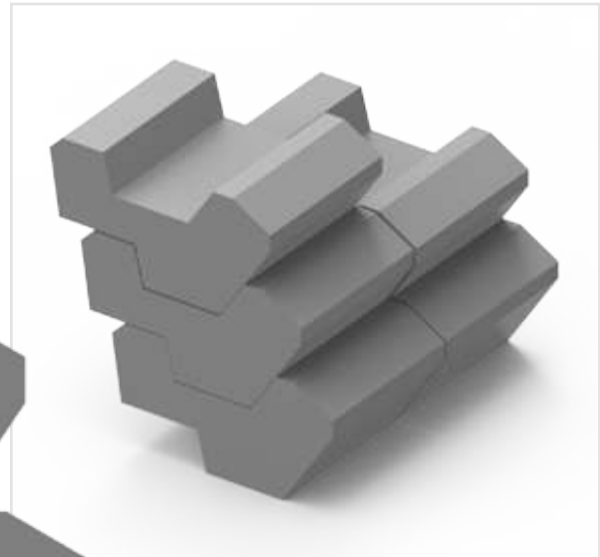
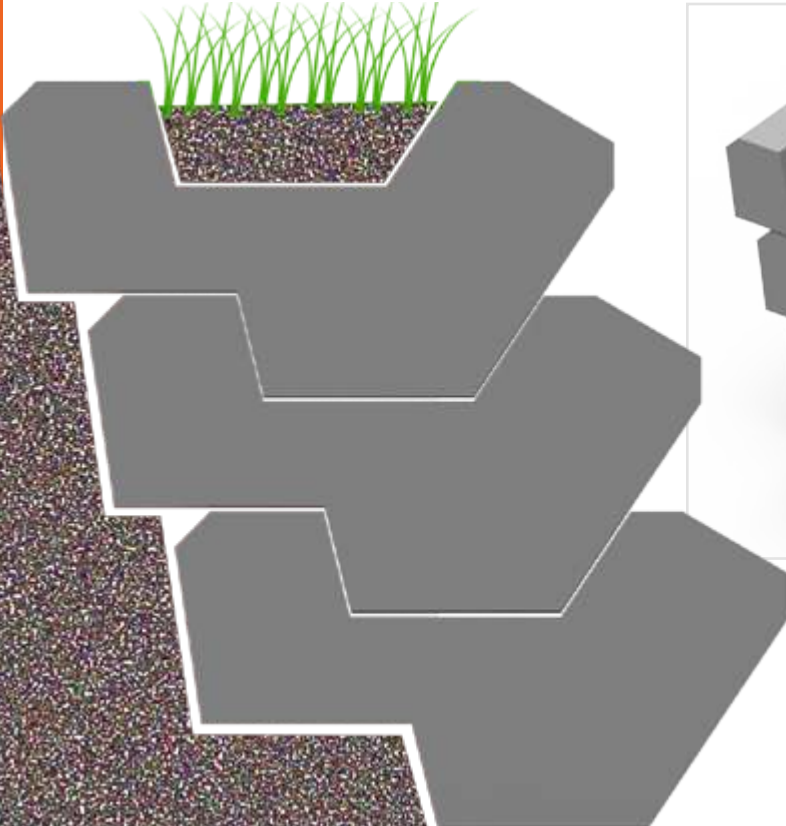
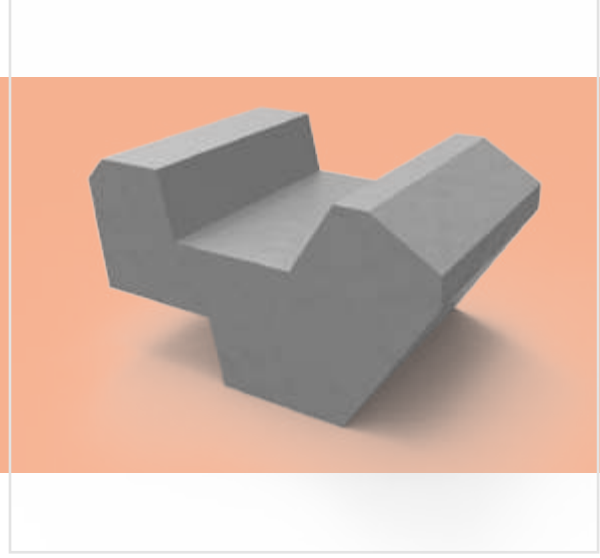
DEKORATİF ÜRÜNLER / DECORATIVE PRODUCTS

Ürün Kodu Product Code	Ölçüler (mm) Dimensions (mm)	Açıklamalar Comments
K60105	320 x 470 x 150	



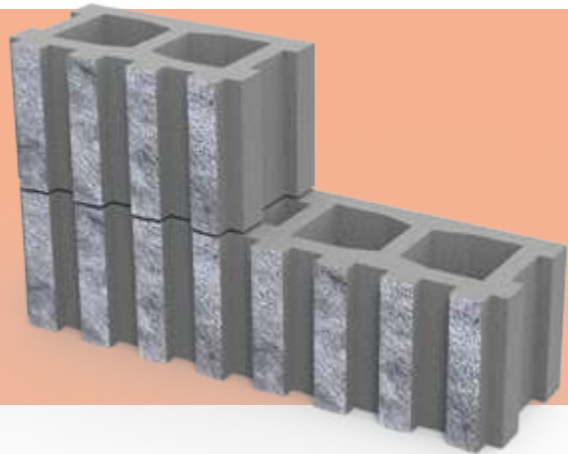
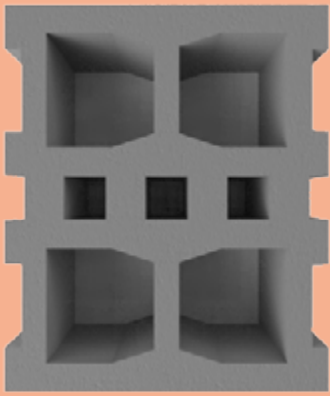
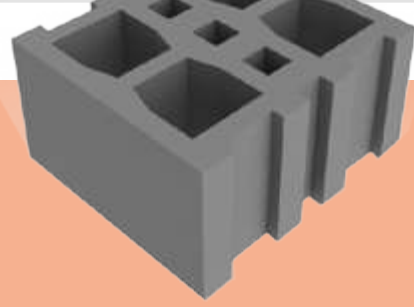
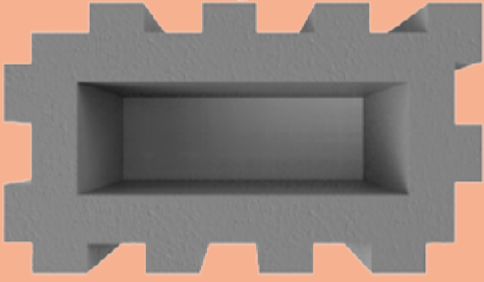
DEKORATİF ÜRÜNLER / DECORATIVE PRODUCTS

Ürün Kodu Product Code	Ölçüler (mm) Dimensions (mm)	Açıklamalar Comments
K60105	250 x 330 x 250	



DEKORATİF ÜRÜNLER / DECORATIVE PRODUCTS

Ürün Kodu Product Code	Ölçüler (mm) Dimensions (mm)	Açıklamalar Comments
K60106	400 x 190 x 200	dimensions can be varied according to the customers' needs
K60107	300 x 400 x 200	dimensions can be varied according to the customers' needs





Nantas Concrete Machines & Concrete Products Ltd. Co.

Ankara Asfaltı 26. Km. Kemalpaşa İzmir TURKEY

Tel.90 232 878 13 59 Fax. 90 232 878 77 65